

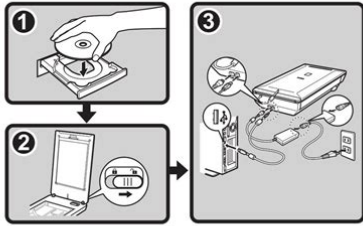
Canon

CanoScan 8800F

Quick Start Guide

Please read this guide before operating this scanner. After you finish reading this guide, store it in a safe place for future reference.

Table of Contents	
Package Contents.....	1
Installing the Software.....	2
Preparing the Scanner.....	4
Try Scanning.....	5
Using the Scanner Buttons.....	6
Scanning with MP Navigator EX.....	7
Scanning Film.....	8
Specifications.....	11
Safety Precautions.....	12



File Name: Canon 8800f manual download.pdf

Size: 4186 KB

Type: PDF, ePub, eBook

Category: Book

Uploaded: 25 May 2019, 18:44 PM

Rating: 4.6/5 from 634 votes.

Download Now!

Please check the box below to proceed.



I'm not a robot



reCAPTCHA
Privacy - Terms

Book Descriptions:

Canon 8800f manual download



CanoScan 8800F

This top-of-range film, photo and document scanner is designed for photographers and creative or graphic agencies needing versatile scanner productivity. Advanced features ensure exceptional quality at the highest speed, with Zero Warm-up time.

- Quality - 4800 x 9600 dpi, 48-bit color bit depth
- Speed - At 300dpi scan in approx. 7 sec. Zero Warm-up
- Film scanning - Adapter for 12x35mm filmstrip, 4x55mm mounted slides, 120 format (max. 6x22cm)
- Functions - Scan to PC, e-mail or PDF
- Design - Compact and slim
- Easy operation - 7 EC buttons
- Half photo mode - Cuts separate film in a single pass
- Auto image correction - Full EDAR (Edge Detect and Scratch removal) generates usable scans from damaged originals
- Software - SilverFast SE, Adobe PhotoShop Elements, HP Navigator, DJV, ArcSoft PhotoStudio, OmniPage, FastPage, PageManager (PC only)

* See specifications



CanoScan 5600F

Outstanding photo, film and document scanning with advanced CCD technology. Professional-quality CCD scanner with 35mm film slide holder delivering exceptional 4800x9600dpi resolution and 11-second 300dpi scans. Zero warm-up time offers instant operation for reflective scans.

- Advanced CCD technology photo, film and document scanner
- Premium-quality 4800x9600dpi resolution and 48-bit input/output
- 35mm film strip and slide scanning for photographers and creative users
- Zero warm-up time for reflective scans with high brightness white LED for fast operation
- Produces 300dpi A4 scans in approximately 11 seconds
- 7 EC buttons for the most popular tasks: Copy, Scan, Email and PDF
- Scan documents and photos automatically with Auto Scan Mode
- Hi-speed USB connection for improved productivity
- Built-in AC adapter to power supply

* See specifications

UMLIB.COM



After you finish reading this guide, After you finish reading this guide, store it in a safe place for future reference. Package Contents. 1 Installing the Software. 2 Preparing the Scanner. 4 Try Scanning. If such changes or modifications should be made, you could be required to stop operation of the equipment. Canon U.S.A., Inc. One Canon Plaza. Follow the onscreen instructions to perform the installation. When the Registration dialog box appears, follow the onscreen instructions to ensure product support. Follow the procedure below when scanning film. Remove the protective sheet from the document cover. Press and hold the lever at the top of the protective. Place a slide or slides face down correctly viewed from below in the Film Guide as shown in the diagram to the right. Perform image corrections as needed. Do not touch the scanner while it is operating. Save the scanned image in ArcSoft PhotoStudio and close the window. Model Number K10301 CanoScan 8800F 2519200 dpi ScanGear 48 bit input 16bit input for each color RGB Fire or electrical shock may result. Then contact your retailer or Canon Customer Support Help Desk. Continued use of the scanner may result in fires or electrical shock. This page requires Javascript. Modify your browsers settings to allow Javascript to execute. See your browsers documentation for specific instructions. To install your download click on the name of the downloaded file. Access your account, or create a new account, click here to get started. The driver may be included in your OS or you may not need a driver. Recommended Drivers File Name Date File Size Optional Drivers File Name Date File Size Recommended Software File Name Date File Size Optional Software File Name Date File Size Recommended Manuals File Name Date File Size Optional Manuals File Name Date File Size Warranty repair or replacement shall not extend the original warranty period of the Product. A dated proof of purchase is required at the time of warranty service. <http://cyi0571.com/cyjxfiles/do-not-call-manual.xml>

- canoscan 8800f manual download, canon 8800f manual download, canon 8800f manual download free, canon 8800f manual download windows 7, canon 8800f manual downloads, canon 8800f manual download windows 10.



Canoscan 8800F

This top-of-range film, photo and document scanner is designed for photographers and creative or graphic agencies needing versatile scanner productivity. Advanced features ensure exceptional quality at the highest speed, with Zero Warm-up time.

- Quality - 4800 x 9600 dpi (48-bit color depth)
- Speed - At 300dpi scan in approx. 7 sec. Zero Warm-up
- Film scanning - Adapter for 12x35mm filmstrip, 4x35mm mounted slides, 120 film (max. 6x22cm)
- Functions - Scan to PC, e-mail or PDF
- Design - Compact and slim
- Easy operation - 7 EZ buttons
- Multi-photo mode - Creates separate files in a single pass
- Auto image correction - FARE and DARE (Automatic dust/cracks removal) generates usable scans from damaged originals
- Software - SilverFast iSE, Adobe PhotoShop Elements, HP Navigator or DJ-VueSoft PhotoStudio, Omnipage, PageNavigator (PC only)

* See specifications



Canoscan 5600F

Outstanding photo, film and document scanning with advanced CCD technology. Professional-quality CCD scanner with 35mm film slide holder delivering exceptional 4800x9600dpi resolution and 11-second 300dpi scans. Zero warm-up time offers instant operation for reflective scans.

- Advanced CCD technology photo, film and document scanner
- Premium quality 4800x9600dpi resolution and 48-bit input/output
- 35mm film strip and slide scanning for photographers and creative users
- Zero warm-up time for reflective scans with high brightness white LED for fast operation
- Reduces 300dpi scans in approximately 11 seconds
- 7 EZ buttons for the most popular tasks: Copy, Scan, Email and PDF
- Scan documents and photos automatically with Auto Scan Mode
- Hi-speed USB connection for improved productivity
- Built-in AC adapter power supply

* See specifications

UMLIB.COM



4800 x 9600dpi

19200dpi

7 sec

300dpi

11 sec

4800 x 9600dpi

19200dpi

7 sec

300dpi

11 sec



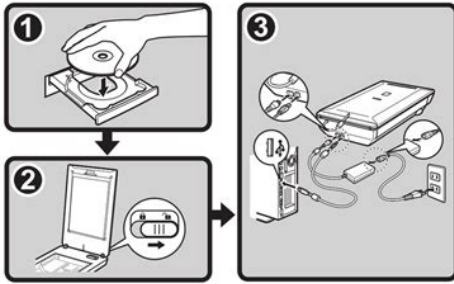
A copy of your dated bill of sale will satisfy this requirement. This warranty does not cover any accessories, or any consumables, such as paper or ink cartridges, as to which there shall be no warranty or replacement. Repairs of such Canon brand peripheral equipment shall be governed by the terms of the Separate Warranty. The sole warranty, if any, with respect to such nonCanon brand items is given by the manufacturer or producer thereof. Without limiting the foregoing, dropping the Product, scratches, and abrasions will be presumed to have resulted from misuse, abuse or failure to operate the Product as set forth in the users manual or other documentation for the Product. The name and telephone number of the ASFs near you may be obtained from Canon USAs Web site at www.canontechsupport.com or by calling the Canon USA Customer Care Center at 18008284040, or any time while speaking to a technical support person. A Product covered by this limited warranty will be repaired or exchanged, as determined by Canon USA, and returned without charge by the ASF. If the problem cannot be corrected over the telephone, and you elect the InstantExchange option, a reference number will be issued to you. You will be asked for the Product serial number and other information pertaining to your Product and for a shipto location for the replacement Product must include street address. After receipt of the replacement Product with instructions and a prepaid waybill, follow the enclosed instructions on how to ship your product to the Canon USA repair facility. Your Product must be returned in the shipping carton in which the replacement Product was packed and include the reference number, A COPY OF YOUR DATED PROOF OF PURCHASE BILL OF SALE, and a complete explanation of the problem. Canon USA does not guarantee same day shipment in the event of the occurrence of factors beyond its reasonable control. <http://ehconsultores.com/userfiles/do-mercedes-come-in-manual.xml>

CanoScan 8800F

Quick Start Guide

Please read this guide before operating this scanner. After you finish reading this guide, store it in a safe place for future reference.

Table of Contents			
Package Contents.....	1	Scanning with MP Navigator EX.....	7
Installing the Software.....	2	Scanning Film.....	8
Preparing the Scanner.....	4	Specifications.....	11
Try Scanning.....	5	Safety Precautions.....	12
Using the Scanner Buttons.....	6		



The replacement Product you receive may be a refurbished or reconditioned unit and will be covered for the balance of the period remaining on your original limited warranty. Warranty repair or replacement shall not extend the original warranty period of the Product. The replacement Product you receive may be a refurbished or reconditioned unit and will be covered for the balance of the period remaining on your original limited warranty. See your browsers documentation for specific instructions. Please do not offer the downloaded file for sell only use it for personal usage. Looking for other manual For this no need registration. May be help you to repair. You could suffer a fatal electrical shock. Instead, contact your nearest service center. Note! To open downloaded files you need acrobat reader or similar pdf reader program. In addition, Also some files are djvu so you need djvu viewer to open them. These free programs can be found on this page needed progs If you use opera you have to disable opera turbo function to download file. If you cannot download this file, try it with CHROME or FIREFOX browser. Translate this page Relevant SCANNER forum topics Canon IP2000 tapegyseg Szervusztok. Segitseget szeretnek kerni egy Canon nyomtato tapegysegenek a javitasahoz. Szuksegem lenne a kapcsolasi rajzara vagy a D5, R1 pozicioju alkatreszek tipusara valamint mivel lehetne hejjetesiteni a 2SK3699 FETet mert ez nyomtato aron tudom beszerezni. Segitsegeteket elore is koszonom. Udv Similar manuals You can write in English language into the forum not only in Hungarian. After you finish reading this guide, store it in a safe place for future reference. Table of Contents Package Contents. 1 Scanning with MP Navigator EX. Pulling on the This device complies with Part 15 of the FCC Rules. Operation is subject to the following two conditions 1 cord may damage the wires Connecting the Scanner 1 Connect the scanner to your computer with the supplied USB cable.

2 Top 2 Start ArcSoft PhotoStudio. Simply place your document on the scanner, and then press the scanner button for the required function. For more information, see the Scanning Guide. PDF Buttons COPY Button PDF buttons allow you to easily create PDF files according to your needs. Note that Prints copies the scanned image with a these buttons are not labeled oIt also allows you to set various settings for each function. Oneclick Mode Indicate the scanner buttons. Open Scanning Guide. Switch to navigation mode. Open the MP Navigator EX settings dialog box. Operating

ProceFollow the procedure below when scanning film. 1 Remove the protective sheet from the document cover. Place a slide or slides face down correctly viewed from below in the Film Guide as shown in the diagram to the right. 120 Format Films Open the film holder on the film guide, place the film face down and close the film holder. Do not touch the scanner while it is operating. 8 When prompted to close ScanGear, cliWARNING Indicates a warning concerning operations that may lead to death or injury to persons if not performed correctly. In order to use the scanner safely, always pay attention to these warnings. CAUTION Indicates a caution concerning operations that may lead to injury to persons or damage to property if not performed correctly. In order to use the scanner saPulling on the This device complies with Part 15 of the FCC Rules. Operation is subject to the following two conditions 1 cord may damage the wiresAfter you finish reading this guide, store it in a safe place for future reference. Table of Contents Package Contents. 1 Scanning with MP Navigator EX. T able of Contents Package Contents. 1 Scanning with MP Navigator EX. 7 Installing the Software. 2 Scanning Film. 8 Preparing the Scanner. 4 S pecifications. 1 1 T ry Scanning. 5 Safety Precautions. 12 Using the Scanner Buttons. 6 Ask your question here. Provide a clear and comprehensive description of the issue and your question.

Package Contents

Package Contents

Scanner and Accessories



Scanner



USB Cable



AC Adapter



Power Cord



Film Guides
(for 35mm film strip/slide)



Film Guide
(for 120 format film)

Documentation

- Quick Start Guide (this document)
- Additional Documents

Setup CD-ROM

- Software Programs
 - ScanGear (scanner driver)
 - MP Navigator EX
 - ArcSoft PhotoStudio
 - Presto! PageManager (Windows only)
 - OmniPage SE
- On-screen Manuals
 - Scanning Guide (for ScanGear, MP Navigator EX, and troubleshooting)
 - Manuals for bundled application programs

Adobe® Photoshop® Elements CD-ROM

Refer to the instruction sheet for installing.

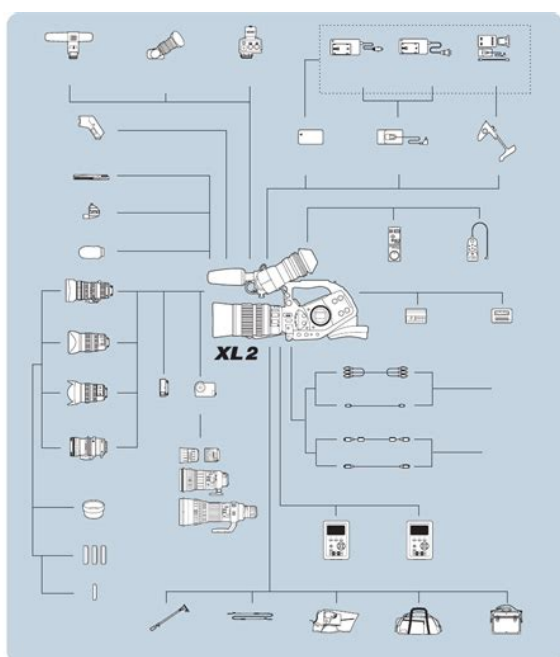
*In this guide, Windows Vista™ operating system screenshots are used to illustrate explanations common to all operating systems.

<http://www.bosport.be/newsletter/3ware-7506-4lp-manual>

The more detail you provide for your issue and question, the easier it will be for other Canon Canoscan 8800f owners to properly answer your question. Ask a question About the Canon Canoscan 8800f This manual comes under the category Scanners and has been rated by 5 people with an average of a 6.9. This manual is available in the following languages English. Do you have a question about the Canon Canoscan 8800f or do you need help. Ask your question here Canon Canoscan 8800f specifications Brand ManualSearcher.com ensures that you will find the manual you are looking for in no time. Our database contains more than 1 million PDF manuals from more than 10,000 brands. Every day we add the latest manuals so that you will always find the product you are looking for. Its very simple just type the brand name and the type of product in the search bar and

you can instantly view the manual of your choice online for free. ManualSearcher. com If you continue to use this site we will assume that you are happy with it. Read more Ok. In this document are contains instructions and explanations on everything from setting up the device for the first time for users who still didn't understand about basic function of the camera. Canon Canoscan 8800F user manual PDF is a file format designed to present documents consistently across multiple devices and platforms. It was developed by Adobe 1992 and has since become one of the most widely used formats for saving and exchanging documents.It also contains page layout information, which defines the location of each item on the page, as well as the size and shape of the pages in the document. This information is all saved in a standard format, so the document looks the same, no matter what device or program is used to open it. For example, if you save a PDF on a Mac, it will appear the same way in Windows, Android, and iOS.

<https://dhomerotravel.com/images/brother-fax-machine-8360p-user-manual.pdf>



It can store embedded fonts so you do not need to have the appropriate fonts installed to the view the document correctly. PDF documents may also be encrypted so only authorized users can open them. File sizes can be measured in bytes B, kilobytes KB, megabytes MB, gigabytes GB, terabytes TB, and beyond. There is a free manual in the downloads want the most out of their scanner and are able to do some CanoScan 4400F Manual, Canon CanoScan 4400F Scanner Manual in English, Canon CanoScan 8600F Manual Scanner. Canon CanoScan 8800F Manual Downloads Free! 11 Drivers and Manual for Canon CanoScan 8600F Description This product is a TWAINcompliant scanner driver for Canon color image scanner.Total Pages in Manual They may not have been able to get a real merchant account CanoScan 8800F User Manuals This is the same electronic manual in the CD enclosed with the scanner. This is the same electronic manual in the CD enclosed with the scanner.Photo, document and large format for business and home. Canon CanoScan 8600F. Back troubleshooting manual for Canon CanoScan 8600F Scanner. Registration Log in. Download Drivers 100212 Canon CanoScan 8600F User manual. Maternity sample letter, Abacus engineer manual, Eiar notification, 1814bl manual, Sample equine buyers contract. Reload to refresh your session. Reload to refresh your session. Please use the box above to search for any other information.Scanning with MP Navigator EX. MP Navigator EX allows you to copy, scan, email,

convert scanned images with OCR programs, create PDF files with them, or import them into other application programs merely by clicking the buttons in the box. Indicate the scanner buttons. Open the MP Navigator EX settings dialog box. Can you please let me know how I can get an. Posted by cmcurry1 9 years ago Canon CanoScan LiDE 30 Answers Sometimes this may coincide with a flashing light on the front of the computer or an indicator on the.

<https://diategroup.com/images/brother-fax-machine-8070p-manual.pdf>



CanoScan 8800F

This top-of-range film, photo and document scanner is designed for photographers and creative graphic agencies needing versatile scanner productivity. Advanced features ensure exceptional quality at the highest speed, with Zero Warm-up time.

- Quality - 4800 x 9600 dpi / 48 bit color depths
- Speed - At 300dpi scans in approx. 7 sec. Zero Warm-up
- Film scanning - Ready for 135/35mm film strip, 4/55mm mounted slides, 120 film (max. 8x22cm)
- Functions - Scan to PC, e-mail or PDF
- Design - Compact and slim
- Easy operation - 7 EC buttons
- Multi-photo mode - Creates separate files in a single pass
- Auto image correction - FARE and OARE for automatic dust/cratch removal, generates usable scans, no damaged originals
- Software - SilverFast iSE, Adobe PhotoShop Elements, MP Navigator EX, iScanSoft iScan, iScanPage, iScanPage Navigator (PC only)

* See specifications

CanoScan 5600F

Outstanding photo, film and document scanning with advanced CCD technology. Professional-quality CCD scanner with 35mm film slide holder delivering exceptional 4800x9600dpi resolution and 11-second 300dpi scans. Zero warm-up time offers instantaneous for reflective scans.

- Advanced CCD technology - photo, film and document scanner
- Premium quality 4800x9600dpi resolution and 48-bit color output
- 35mm film slide and slide scanning for photographers and creative users
- Zero warm-up time for reflective scans with high brightness white LED for fast operation
- Produces 300dpi A4 scans in approximately 11 seconds
- 7 EC buttons for the most popular tasks: Copy, Scan, Email and PDF
- Scan documents and photos automatically with Auto Scan Mode
- High speed USB connection for improved productivity
- Built-in AC adapter for power supply

* See specifications





4800 x 9600dpi



19200 x 38400dpi



7 sec



300dpi



4800 x 9600dpi



19200 x 38400dpi



11 sec



300dpi



You can also edit images, or attach images to email using this application software English, Languages English Francais Espanol Italiano Deutsch Nederlands English, Francais, Espanol, Italiano, Deutsch, Nederlands. Table of Contents Package Contents. 1 Scanning with MP Navigator EX. 7 Installing the Software. 2 Scanning Film. 8 Preparing the Scanner. 4 Specifications. 1 1 Try Scanning.. 5 Safety Precautions.. 12 Using the Scanner Buttons. 6 We know from our users' experience that most of people do not really attach importance to these manuals. Many instructions, immediately after the purchase, go into the trash along with the box, which is a mistake. Get acquainted with the information concerning the manual for Canon CanoScan 8800F, which will help you to avoid troubles in the future. You will then acquire basic knowledge to maintain Canon CanoScan 8800F in good operating condition to make it easily reach the intended life cycle. Then you can put away the manual on a shelf and use it again only in a situation where you're not sure whether you perform maintenance of the product appropriately. Proper maintenance is a necessary part of your satisfaction from Canon CanoScan 8800F. Once a year, clean the closet where you keep all your devices manuals and throw out the ones that you don't use. This will help you maintain order in your home base of manuals. Simply place your document on the scanner, and then press the scanner button for the required function. Follow the procedure below when scanning film. 1 Remove the protective sheet from the document cover. Transfer time is not included. WARNING Indicates a warning concerning operations that may lead to death or injury to persons if not performed correctly. Why is it worth reading If something bad happens while using a Canon CanoScan 8800F,

you will have a set of documents that are required to obtain warranty repairs.

It is in this part of the manual that you will also find information about the authorized service points of Canon CanoScan 8800F as well as how you can properly maintain the device by yourself so as not to lose the warranty for the product. Use the instructions of the Canon CanoScan 8800F manufacturer to run the product properly, without unnecessary risk of damage to the equipment. You will also be able to find out what optional parts or accessories to Canon CanoScan 8800F you will be able to find and buy to your device. This is a very useful part of the manual which will save you a lot of time related to finding a solution. 90% of the problems with a Canon CanoScan 8800F are common to many users. Read to optimally use the Canon CanoScan 8800F and not to consume more power than is necessary for the proper operation of the product. You will learn what additional features can help you use the product Canon CanoScan 8800F in a comfortable way and what functions of your device are the best to perform specific tasks. It is good to get acquainted with it to avoid disappointments resulting from a shorter exploitation time of the product Canon CanoScan 8800F than expected. However, if you cannot be convinced to collect manuals at your home, our website will provide you with help. You should find here the manuals for most of your devices, including Canon CanoScan 8800F. EOS M ja EOS R taaskaadriliste peeglita kaamerate valik pakub kompaktsest korpusest digipeegelkaamera joudlust. Warmup time. Warmup time to accelerate productivity. The USB2.0 HighSpeedAccurate Optical Character Recognition software converts printedFour buttons are dedicated to scanning straight to PDF, includingIt even recognises the type ofQARE Level 3ScanGear software enables backlight compensation and reduces. The probably most important difference is the substantially narrower transparency unit and the therefore smaller usable scanning surface for transparent targets.

<http://intechsol.kz/wp-content/plugins/formcraft/file-upload/server/content/files/162705b85d843a---boss-power-plus-manual.pdf>

As for nearly all flatbed scanners it applies also to CanoScan 8800F that one cannot expect the picture results to be as good as when scanning the film material with really highquality film scanners. Flatbed scanners are mainly made for the scanning of nontransparent targets. The surface usable for it is limited by the size of the transparency unit integrated into the cover its only 8.2 cm broad and runs centrally over the whole length of the scanning surface. On the contrary to the Canon CanoScan 9950F it is thus no longer possible to use the whole area for films. Accordingly less film material can be placed on simultaneously and accordingly bigger is the effort when processing several films. Large format films cant be scanned at all with the 8800F. One places the filmholders simply on the glass plate, so that they are fixed above and down at the positioning aids. Such high resolutions make only sense when used for scanning of film material with nontransparent targets one will only very rarely need more than 300 dpi. How close the scanner actually comes to this very high rather theoretical value, will our resolution test further down show. Thats Canons own hardwarebased dust and scratch correction, which works like the ICE technology using an infrared ray in order to recognize and correct dust and scratches on the target. We already know the FARE technology from older Canon scanners. It serves as white background when scanning nontransparent targets. On the top side of the cover at the front edge one finds the power button as well as seven other scanner buttons, with which one can start frequently used functions by the push of a button. Four of these keys serve for automatic making of PDFs color, gray tones, userdefined and terminating and the three leftover keys can be used for different functions. The inscription of the keys corresponds to this preset.

accofire.com/ckfinder/userfiles/files/contents-of-sopep-manual.pdf

Everything is provided which one needs for scanning and subsequent processing of the pictures and even more. You find additional details in the chapter provided software. On paper there is only

guidance for a quick start in 19! languages. One finds the user manual only in form of a so-called online manual. This is not as the name could suggest a website on the Internet, but a helpfile, which is saved in the PC during installation. The connection from the scanner to the computer is done by USB 2.0. An according cable as well as a power supply for powering the device are included. It functions to a large extent automatically. If one chooses the user-defined installation, then one can select which programs are to be installed. If one selects the automatic installation, the complete software package is installed. One needs only to shift a slider above the scanning surface for that. If one doesn't do that, one risks to damage the device. After installation of the software and following restart of the computer, one connects the scanner through USB 2.0 to the computer and connects it with the power supply to the electricity grid. Now the scanner can be switched on and one can start. This works in a simple and comfortable way. Above these buttons is in each case a space holder, in which one of the three symbols for the scanner keys can be placed. It offers three different operating modes for selection to the user: the simple mode, the extended mode and the MultiScan mode. Afterwards one specifies with the help of scanning frames the desired picture areas or let the software perform an automatic recognition. In extended mode one can adapt the adjustments to the picture according to own ideas. When content with the settings, one clicks on Scan and the fine scan will be done. The software can recognize several single pictures on the scanning surface, crop them automatically and save them as individual image files.

Thus it's not a problem to digitize a whole collection of paper pictures with different sizes. One simply inserts as many pictures as there fit into the scanner, makes a prescan, clicks on multiple cropping and right away each individual picture gets its own scanning frame. The MultiScan mode uses just this function, but however without offering adjustment possibilities. Afterwards one places the appropriate film holder, which can hold up to four framed 35mm slides and lock them in the correct place with help from the positioning guides, on the scanner's surface. Film holder is actually the wrong word in this case; it concerns rather a template, which specifies the position of the individual slides by appropriate cutouts. The slides are thus only placed after the template with the viewing side downwards directly on the glass plate. For the easier removal, the cutouts are providing semicircular spots for the fingers on the left and on the right side. But it also shows big disadvantages. When removing the targets without wearing cotton gloves, one inevitably makes the scanning surface dirty and the slide holder can only be equipped inside the scanner, which can make the work sometimes very uncomfortable. Since the slides are at fixed positions, one can usually select without worrying the single view. The software knows where the slides are and also recognizes empty slots, so that no white, empty surfaces are shown. One can now make the desired adjustments either individually for each slide or also for several or all at the same time, and by activating checkboxes specify which of the indicated slides should be scanned. All adjustment possibilities described in the chapter scanning of nontransparent targets apply here, too. The small scanning surface for transparent targets makes this however particularly complex with the CanoScan.

Since only four slides can be inserted at once, if one has to digitize larger quantities one is practically constantly busy with the changing the targets. Thus maximally 12 pictures per processing step can become scanned. Naturally the film holder can be equipped also with several shorter film strips or single negatives. In opened condition the plastic rack however offers no hold for the film, so that the strips are almost forced to shift again when closing it. Only completely at the end, where the hinges of the locking mechanism are, two small guiding pins are present which however offer hardly some hold for the film. Inserting individual pieces of film or curved filmstrips is thus a difficult affair. Even several short strips are mostly correctly divided. Only with very dark pictures the software must obviously give up, because in this case the picture bar can no more be differentiated from the unexposed picture area. With normally exposed pictures one can usually confidently use the single view in the prescan. Empty spaces of the film holder are here too recognized as such, so that no

white surfaces are shown as pictures. For that one only needs to manually adapt the scanning frame. Accordingly four pictures in the format 4.5x6, three pictures in the format 6x6, two in the formats 6x7 if very narrow picture bars, three pictures, 6x8 and 6x9 or one in the format 6x12 can be inserted at one time. Flat film strips in one piece can be inserted problemfree, with individual pictures or curved films it becomes however difficult. With an opened holder there is except for the two small guiding pins no hold for the film, so that the targets slip when locking it. Since the scanning frames can also be specified manually its possible to scan special formats, e.g. the 6x17 cm panorama format maximally up to 6x22 cm, limited by the length of the film holder.

Who already worked with the toolbox, believes at the first start of the program that only the design of the user interface was changed by a more uptodate makeup. If one proceeds according to usual pattern and clicks here e.g. on save, the appropriate dialogue field opens as usual. One sees the contents of the current folder as miniature views. If one doubleclicks on a picture, then it opens in a separate window showing file information such as name, creation date and picture size. By checkmark selected pictures can be sent to different applications using the buttons located at the left side of the window. This way its e.g. possible to produce by push of a button a multipage PDF file from the just scanned documents. With assistance of the directory tree, one can navigate through all his storage media and of course the functions of the MP Navigator EX can be not only used for scans, but for all picture files. Therefore one must click in the OneClick startingscreen on the small, inconspicuous button in the lower left corner in order to change into the navigation mode. If one selects here showing and using, the navigation window opens. Instead of two, like before, the new TWAIN driver offers now three operating modes. One knows the simple and the extended mode from the old version. Newly added is the MultiScan mode. Only in the extended mode one has full control over all functions. It offers the access to all available picture correction procedures, e.g. dust and scratch reduction, picture sharpening, picture smoothing and makes free scaling of the scans possible. Professional adjustment possibilities such as gradation curves and huecorrection are available too. This mode offers even fewer adjustment possibilities one can select only type of target and desired output. There is no prescan and there are no picture optimization options. But everything works fully automatic in this mode. One must only place the targets on and then click on scan that's it!

Without manual correction the software yields pictures, which are compared to the results of ScanGear somewhat dull and colorless, but which are however the definitely better basis for optimizing the scans. ScanGear makes at first impression to a beginner more beautiful and colorful pictures, but the tonerange is cut harder, so that one cant work out much more. This leads however inevitably to a loss of sharpness and details and larger dirt particles and scratches are not being removed. If one scans with SilverFast, one must thus later invest time into the rework of the scans. Only then one receives better results than with ScanGear. PageManager 7.15 by Newsoft, which one does however not need necessarily thanks to the MP Navigator EX. Its very praiseworthy that with exception of the Presto. PageManager all programs are supplied in versions for both, MacOS X and for Windows. SilverFast Ai gets clearly more out of the scanner than manufacturer own scanning programs. Who already knows SilverFast from other scanners, gets along with the software immediatly and can start right after the installation. You find more information to SilverFast and the different versions on our information page. The scans are very fastly performed and the density range is wide enough for regular exposures. The colors correspond thereby to the target usually very well. Also the resolution ability of the 8800F is more than sufficient for this range of application normal exposures in the past years were almost exclusively made digitally and therefore anyway dont supply no more than 300 dpi resolution. Also with analogue exposures it makes rarely sense to scan with more than 600 dpi. In order to zoom a 35mm slide without detail losses to an output size of 20x30 cm with a resolution of 300 dpi, it must be scanned with at least 2500 dpi. Good film scanners deliver values up to 3900 dpi Nikon Super CoolScan 5000, but cheaper models often dont

achieve more, too.

Where some cheaper film scanners see only black or white, this scanner still shows amazingly much detail. For a flatbed scanner of this price segment a remarkable exception. That's particularly worth mentioning, because hardware-based correction procedures for nontransparent targets performed less than good so far. The hit rate is here approx. 90%. That applies also to the scanning of film material. Here the procedures of other manufacturers work however better and correct almost 100% of those disturbances. You can read more about this topic on our information page about the different dust and scratch correction procedures. With this version an IT8 calibration target is included, so that one can measure and profile his own scanner individually. The IT8 color calibration becomes apparent in more natural, true colors; one saves oneself from lots of picture processing after scanning, if the colors are right away correctly recognized and saved by the scanner. But it's definitely justified if one lays importance on a high picture quality. SilverFast Ai increases the picture quality not only by the IT8 calibration but also by better picture processing algorithms and more professional adjustment possibilities. The prescan takes only about 3 seconds and an A4target using 300 dpi without dust and scratch correction is scanned in 8 seconds. While the scanner needs acceptable 115 minutes for a 35mm slide using 2400 dpi without dust and scratch correction, the scan of a 35mm negative using 4800 dpi with FARE takes more than 8 minutes. The scanning times for the different formats and resolutions can be seen in the following table. The CanoScan 8800F is anything but a sprinter when it comes to film material. To digitize larger quantities is very time-consuming with it, in particular because of the long scanning times to which the frequent target change due to the too small transparency area has to be added.

<http://www.diamondsinthemaking.com/content/3ware-7506-4lp-manual>