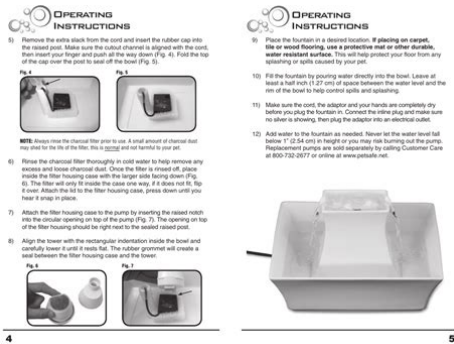


Drinkwell Pagoda Manual



File Name: Drinkwell Pagoda Manual.pdf

Size: 1803 KB

Type: PDF, ePub, eBook

Category: Book

Uploaded: 30 May 2019, 12:23 PM

Rating: 4.6/5 from 706 votes.

Status: AVAILABLE

Last checked: 9 Minutes ago!

In order to read or download Drinkwell Pagoda Manual ebook, you need to create a FREE account.

[**Download Now!**](#)

eBook includes PDF, ePub and Kindle version

[Register a free 1 month Trial Account.](#)

[Download as many books as you like \(Personal use\)](#)

[Cancel the membership at any time if not satisfied.](#)

[Join Over 80000 Happy Readers](#)

Book Descriptions:

We have made it easy for you to find a PDF Ebooks without any digging. And by having access to our ebooks online or by storing it on your computer, you have convenient answers with Drinkwell Pagoda Manual . To get started finding Drinkwell Pagoda Manual , you are right to find our website which has a comprehensive collection of manuals listed.

Our library is the biggest of these that have literally hundreds of thousands of different products represented.



Book Descriptions:

Drinkwell Pagoda Manual

Washing your filter will allow the soap to seep into the pores and this cannot be removed, making the filter unusable and unsafe for your pet. The filter removes bad tastes and odours to improve the taste of the water and catches hair and small particles to keep the water cleaner. Either wash it in the top rack of your dishwasher or handwash these parts. If your dishwasher runs too hot, we recommend handwashing. When handwashing, use a bottle brush, aquarium brush, soft sponge, or brushes included in the Fountain Cleaning Kit and dish soap. Please note if you have the Avalon or Pagoda fountains, the filter housing should be hand washed. It is not dishwasher safe. There may be a faceplate cover over the impeller than can be pulled up with a coin or fingernail. Wash the impeller in soapy water, removing hair and other gunk that has collected around it. A cotton swab or small toothbrush might work too, or anything that can reach all the way inside of the cavity. Fill with water. Replug in fountain. This is a new object added to their environment, so give your pet enough time to get used to the fountain at their own pace. This time frame will usually only take a few days, and it is very rare that a pet will refuse to use the product entirely. If your pet prefers to drink running water from the faucet or shower, your pet will probably get used to the fountain very quickly. This way your pet can get used to drinking from the fountain without the noise and splash of running water. Try setting it to a lower flow setting. Remove the filter from the fountain, then add tuna juice or bouillon to the water until your pet is used to the new product. After that, you can clean the fountain, replace the filter, and refill the fountain with regular water. The filters do not purify the water. Change them every 24 weeks, depending on how many pets use the fountain, to keep the fountain water fresh and clean.<http://abigskyevent.com/admin/UserFiles/crafco-ss125-parts-manual.xml>

- **drinkwell pagoda manual, drinkwell pagoda fountain manual, drinkwell pagoda manual, drinkwell pagoda manual, drinkwell pagoda manual, drinkwell pagoda fountain manual, petsafe drinkwell pagoda manual, petsafe drinkwell pagoda fountain manual.**

If you have more pets or notice more debris, a slimy feel, or decreased water flow in your fountain, you should clean it more often. Prefilters can usually be changed less frequently. They are safe to use with your pets drinking water. The organic charcoal used in the filters is made of coconut shells. Over time, debris gets stuck in the outer fabric of the filter, making it more difficult for the water to pass through it. The inner part of the filter contains granulated carbon with hundreds or thousands of microscopic holes, which bind to impurities in the water that cause bad tastes and smells. This binding prevents impurities from returning to the water. Eventually, the holes become clogged and can no longer remove impurities. Change the water and clean your fountain more frequently to prevent this. Soap residue may cause the sliminess. Be sure to rinse every part thoroughly before reassembling the fountain. To remove these deposits, clean the fountain parts with a 90% water, 10% vinegar solution. Rinse all parts thoroughly afterwards. Use filtered or purified water instead of hard tap water to prevent this. Some pets are prone to spilling. Watch your pet when he drinks to see if this is the cause. If it is, you can purchase a fountain mat or other waterresistant mat to place under the fountain. Look for visible cracks in the bowl. Some fountains hum a little louder than others. It should return to normal levels within a few minutes. If the noise stops when plugged back in, its possible that some debris is caught on the impeller. Remove the pump and clean the impeller. Try rubbing a small amount of vegetable oil onto the magnetic pin with a cotton bud to lubricate the impeller. See below for full cleaning steps. Try adding plain white vinegar inside the pumps cavity

without the impeller and allow it to soak for 1015 minutes. Allow the impeller to soak in a separate bowl of vinegar for the same duration of time. <http://www.stairsru.ru/img/lib/crafft-aire-acondicionado-manual-instrucciones.xml>

Clean all fountain parts in soap and water before reassembling the fountain. Gently but firmly press down on this pin to reseal it into its proper place in the motor. If the pin has completely dislodged itself from the motor, it cannot be placed back into the motor cavity properly and the motor will have to be replaced. Call Customer Care for information on replacing your motor. Try switching to a top with one fewer spout opening. Sometimes it takes a few minutes for the motor to start pumping water once its refilled or plugged in. If water doesn't flow after 5 minutes, try these troubleshooting tips To prevent this, you can purchase a cord cover from most hardware stores. You could also try securing the cord to the floor with duct tape. Lack of regular cleaning may result in the pump becoming clogged with pet hair and food debris. The pump must be cleaned every 24 weeks to ensure proper function. There may be a faceplate cover over the impeller than can be pulled up with a coin or fingernail. Wash the impeller in soapy water, removing hair and other gunk that has collected around it. A small toothbrush might work too, or anything that can reach all the way inside the cavity. Hard water will cause calcium deposits to build up in the pumps cavity, blocking the impeller from spinning. If there is evidence of hard water buildup inside the pump, try adding plain white vinegar inside the pumps cavity without the impeller and allow it to soak for 1015 minutes. Clean all fountain parts in soap and water before reassembling the fountain. If your pet is prone to chewing, visit your local hardware store and purchase a conduit cover to protect the cord. If the pump has been in regular use for several years, it may be old and need to be replaced. The fountain parts and pump are not UL approved for outdoor use. Using the fountain outside can damage the pump. If you have used your fountain outside, the pump may need to be replaced.

To prevent this, always keep your fountain water above the fill line. You can also change the foam filter. This can cause the pump to overheat and stop functioning. When refilling the bowl, make sure to add water before turning the fountain on. The charcoal filter is made of organic coconut shells. Rinse the filter in cold water before placing it in the fountain to prevent this. Some filters may shed more charcoal than others due to differing consistency of charcoal in each batch of filters, so don't be surprised if some filters leave behind more charcoal dust than others. Fountains are top rack dishwasher safe except for the pump. We're committed to giving you expert advice to ensure you always receive the very best. Please try again later or please contact Customer Care Would you like to visit our US site To unplug, grasp the plug, not the cord. Call customer service immediately for further instructions. Never pull on the cord to remove the adaptor from the wall outlet. You'll be able to track orders, check Pals Rewards status and more! Surprise them with a gift card for all their pet care needs. Surprise them with a gift card for all their pet care needs. Exclusions apply. Selection varies by store. Check your local store for availability. The hygienic ceramic design is nonporous and easy to clean. The activated carbon, coconut shell filters help absorb molecules out of tap water that can contribute to poor taste and smells. An added foam filter helps protect the pump from pet hair and other debris. All this with the end goal of making your pets water as appealing as possible so they will drink more. Reference operating instructions for pump cleaning instructions. This porcelain dog or cat water fountain provides your pets with fresh filtered water. Flowing, great tasting water encourages your pet to drink more, leading to a healthier and happier life.

<https://labroclub.ru/blog/e-flight-yak-54-manual>

The Drinkwell Pagoda Porcelain Pet Drinking Fountain is a beautiful porcelain dog or cat drinking fountain that features dual waterfalls. When standing water sits out too long, it can become flat and stale. The dual waterfalls of this Drinkwell Fountain continually recirculate up to 70 ounces of filtered water, so the water is always oxygenated and fresh. The dog and cat water fountain also includes a replaceable charcoal filter that helps remove bad tastes and odors from the water. The

result is a fresh supply of water your pets will want to drink. The Drinkwell Pagoda Porcelain Pet Drinking Fountain will look great in your home. Its graceful design and flowing water provide an appealing sight. The porcelain design of this cat drinking fountain is also hygienic and easy to clean. The lowvoltage, submersible pump provides quiet circulation and filtration for a peaceful home environment. This fountain is a convenient drinking option for both cats and dogs. The dual streams provide access for two pets to drink comfortably at the same time, perfect for a multipet household. This dog or cat water fountain can also give you peace of mind. Holding up to 70 ounces of water, it can ensure that your pets have access to clean water throughout the day. This is an ideal option if travel or have a busy schedule. With this dog or cat drinking fountain in your home, you always know fresh, healthy water is available for your pet. Hydrated pets can enjoy a healthier, more comfortable life. The Petco name is used for the brand name. In California PetCoach, LLC does business as PetCoach Insurance Solutions Agency CA License No. 0M10414. Insurance plans are marketed and offered by PetCoach, LLC. Waiting periods, annual deductible, coinsurance, benefit limits and exclusions may apply. Click here for all terms and conditions. Products, schedules, discounts and rates may vary and are subject to change. More information available at checkout.

Items shipping directly from third parties may take longer to arrive. Discount will be reflected in the Cart. All subsequent shipments of your Repeat Delivery include Free Standard Shipping. Shipping to Alaska, Hawaii, Puerto Rico, the Virgin Islands or P.O. Boxes will result in a surcharge. This is based on your default shipping address. Discount taken on the Petco regular price and is reflected in the products Repeat Delivery price. The promotion and discount will automatically be added to your qualifying subtotal. Please contact your local Petco for availability. Subtotal refers to the amount of order before taxes and shipping. The qualifying subtotal excludes any Repeat Delivery orders or OneTime delivery orders. The discount will appear in your cart. Subtotal refers to amount of order before taxes and shipping. Ask a store partner for details. Advantage and K9 Advantix are registered trademarks of Bayer. Do not use K9 Advantix II on cats. Not available in all states. Proof of current vaccinations required. Purchase in a Petco store or on Petco.com required for free application. Discount will be reflected in the Cart. The qualifying subtotal excludes any Repeat Delivery orders or OneTime delivery orders. Discount will be reflected in the Cart. This is based on your default shipping address. Discount taken on the Petco regular price and is reflected in the products Repeat Delivery price. Discount will be reflected in the Cart. This is based on your default shipping address. Discount taken on the Petco regular price and is reflected in the products Repeat Delivery price. Please try again. This unique water bowl fountain provides your furry friend 70 oz. The lowvoltage, submersible pump constantly circulates the water, keeping the water clean while an added foam filter helps protect the pump from pet hair and other debris. This fountain encourages your pets hydration by making the water more appealing to them—just like stopping by a fresh river in the wild.

Best of all, the soothing flow of water is extremely quiet, making it easily approachable, and nondisruptive. So, sit back and go with the flow. The Pagoda Fountain is available in 4 colors Porcelain White, Stoneware Red, Taupe or Himalayan Blue. When cleaning the pump, we recommend cleaning the fountain and changing the filter as well. Replace the foam filter every 1 2 months. Multipet households may need to be cleaned more frequently. The ceramic bowl and tower are topshelf dishwasher safe. Hand wash all other fountain parts. Please note the Outdoor Dog Fountain pump face plate slides out. Completely rinse the pump, then reassemble. These mineral deposits may eventually prevent the impeller from turning properly. To avoid having to replace the pump This can cause the pump to overheat and stop functioning. When refilling the bowl, make sure to add water before turning the fountain on. The pump must be cleaned every 2 weeks to ensure proper function. Check the water level. If water level is too low then the pump will have to work harder causing it to be louder than normal. If the noise stops when plugged back in, it's possible that

some debris is caught on the impeller. Try rubbing a small amount of vegetable oil onto the magnetic pin with a Qtip to lubricate the impeller. This is loose granulated carbon dust from the filter and is completely harmless for your pet to drink. Rinse the filter in cold water before placing it in the fountain to prevent this. Change the water and clean your fountain more frequently to prevent this. Soap residue may cause the sliminess. Unplug the fountain and plug it into a surge protector. This rubber seal secures the electrical power cord to the inside of the bowl and prevents leaking. Some pets are prone to spilling. If it is, you can purchase a fountain mat or other waterresistant mat to place under the fountain. If there is a white chalky substance in the fountain, your fountain may have a mineral deposit buildup from hard water.

To remove these deposits, clean the fountain parts with an 80% water, 20% vinegar solution. Use filtered or purified water instead of hard tap water to prevent this. Either wash in the top rack of your dishwasher or handwash these parts. When handwashing, use a bottle brush, aquarium brush, soft sponge, or brushes included in the Fountain Cleaning Kit and dish soap. Please note if you have the Avalon or Pagoda fountains, the filter housing is hand wash only. Wash the impeller in soapy water, removing hair and other gunk that has collected around it. A cotton swab or small toothbrush might work too, or anything that can reach all the way inside of the cavity. Fill with water. Replug in fountain. Washing your filter will allow the soap to seep into the pores and this cannot be removed, making the filter unusable and unsafe for your pet. The filter is not required for normal operation of the fountain, but it does significantly improve the overall cleanliness and taste of the water for your pets. The filter removes bad tastes and odors to improve the taste of the water and catches hair and small particles to keep the water cleaner. The activated carbon continuously cleans water as it flows through the filter. The prefilter protects the pump from dirt, fur, drool, and debris. Pets, especially cats, can be a little timid with the fountains at first. This is a new object added to their environment, so give your pet enough time to get used to the fountain at their own pace. If your pet prefers to drink running water from the faucet or shower, she will probably get used to the fountain very quickly. Here are a few tips to help transition your pet This way your pet can get used to drinking from the fountain without the noise and splash of running water. Try setting it to a lower flow setting. Remove the filter from the fountain, then add tuna juice or bouillon to the water until your pet is used to the new product.

After that, you can clean the fountain, replace the filter, and refill the fountain with regular water. The activated carbon filter removes bad tastes and odors from the water and catches large particles and debris from recirculating back into the water. The filters do not purify the water. Change them every 24 weeks, depending on how many pets use the fountain, to keep the fountain water fresh and clean. The activated carbon filter should be changed every 24 weeks, depending on the number of pets using the fountain. If you have more pets or notice more debris, a slimy feel, or decreased water flow in your fountain, you should clean it more often. Prefilters can usually be changed less frequently. These filters are similar to filters used in fish tanks. They are safe to use with your pet's drinking water. The organic activated carbon used in the filters is made of coconut shells. Once the filter has been used, the activated carbon tends to settle in the bottom of the pouch. The premium filters have 6 smaller pouches, rather than the 2 in the original filters, so the carbon is spread out more evenly for better filtration quality. Over time, debris gets stuck in the outer fabric of the filter, making it more difficult for the water to pass through it. Eventually, the holes become clogged and can no longer remove impurities. A continuous circulation system They come with replaceable carbon filters that Plus, with a variety of styles and sizes available, you are sure to find the one that's right for Because tiny pets love a clean stream of fresh drinking water that's on demand, too. The smaller sizes Plus, they're These modern looking fountains are sturdy and rustfree, while also being easier to clean and keep Plus, they're made with hygienic ceramic that's easy to clean and top shelf PetSafe is devoted to innovation with a range of products to help you and your pet share the best moments.

They make it a point to consult with top trainers, veterinarians and behaviorists and listen to feedback from pet parents so they can continually improve their designs and processes. I bought one and it is plenty for 4 cats. I refill the water every 2 to 3 days. The filter is quiet and the water trickling down also has quiet the ambience. These filtered water fountains are usually tricky in that the wire usually gets all round and looped. If that makes sense. Very easy to set up, very nice looking, product is definitely as advertised. Totally worth the price. Please try again later. After moving to an apartment, I wanted something that looked nice, instead of a cute flower pot, since it would be in sight. Ordered the Pagoda Tuesday and received this morning, Thursday. Cant beat delivery with Chewy. My cats took right to it and its very nice looking, but. Yes, sounds like a fountain splashing, but in a small, one bedroom apartment, it sounds like Ive left water running, no matter where I am. Tonight Ill see if its soothing while sleeping, or I end up unplugging for a few hours. Please try again later. I got this to help them hydrate and they both loved it. Now getting a replacement, one of the best purchases I made for them. It is a tad loud if the water level isnt right, but it just sounds like a fountain, so to me it not a bad thing. Please try again later. I can't even hear my tv over this fountain. I'm pretty disappointed because I was really excited about this fountain. But the sound of running water is just too loud and drives me crazy. Please try again later. Luckily I had no issues. My cats saw it and were curious. Not too long after, they started drinking out it. So I think its great. Please try again later. I live on a busy street now and thought the sound of water would help mask the sound of traffic. And. as soon as I got this, my cat started drinking more water. So. it was a great purchase for both of us. The color online was very accurate.

She likes the water just fine without it. Please try again later. I have 2 kittens, well now they are almost a year. I was concerned it would be difficult to clean or they would play with the cord, my concerns we unfounded. Please try again later. She is pretty thrilled to be able to drink whenever now. I'm glad we were able to satisfy our spoiled butt! Please try again later. Try cheaper model. She would stick her nose at one end, but only when off. So, dont try this one first. Go with a cheaper type and only upgrade if your cat is enamored with fountain. Please try again later. We purchased this bubbler because we thought it would look more attractive in our kitchen. It does look better but it is VERY noisy. We were so disappointed to find that we couldn't adjust the motor speed like in the Pioneer Pet bubblers. Our cats aren't very impressed with it either. We will not purchase another Drinkwell bubbler. Please try again later. Thank you for your feedback. Please try again later. Water Capacity Sep 25 Oct 29 Our payment security system encrypts your information during transmission. We don't share your credit card details with thirdparty sellers, and we don't sell your information to others. To hide it, choose Ship in Amazon packaging at checkout. To hide it, choose Ship in Amazon packaging at checkout. Used GoodItem will come in original packaging. Packaging will be damaged. Something we hope youll especially enjoy FBA items qualify for FREE Shipping and Amazon Prime. Learn more about the program. Please try again. Please try again. In order to navigate out of this carousel please use your heading shortcut key to navigate to the next or previous heading. Register a free business account Please try your search again later. The freefalling water streams encourage your pet to drink more. Let us help keep your pet healthy and hydrated so you and your pet can live happy together.

The constant water circulation prevents bacteria growth, while the filters remove bad tastes and odors. Great for cleaning your Pagoda Pet Fountain pump. Set your pet's feeding schedule or give some snacks during the day through the smartphone appenabled feeder. Clean the pump parts with warm water and soap, then reassemble. This pet fountain has 2 freefalling water streams that encourage your cat or dog to drink more water. Freefalling streams add more oxygen to the water and keep it fresh for your pet. An activated carbon filter removes bad tastes and odors from your pet's water, and the foam filter helps catch pet hair and other debris to keep the water clean. This fountain holds 70 ounces of water and has an openbowl design, so if your home loses power, your pet will still have access to water from any side. The elevated, upper bowl is great for senior pets, so

they won't need to bend as low to drink. This ceramic fountain is available in 4 colors to blend seamlessly with your home decor. When it's time to clean your fountain, simply place the fountain in the top rack of your dishwasher and hand wash the pump separately. PetSafe brand is here to help you and your pet live happy together. This incredible pet fountain provides a constant flow of water that entices cats and dogs to drink to help prevent dehydration and urinary and kidney diseases. This fountain features two streams of freefalling water to encourage pets to drink more. The Drinkwell Stoneware Pagoda Fountain keeps water fresh with both a foam filter to catch hair and debris and a charcoal filter that removes bad taste and malodor from flowing water. Both filters are also replaceable to ensure that your fountain always provides crisp, clear water. The fountain operates with a submersible, low-voltage 12V pump with an inline plug for easy indoor operation. The pump can also be easily removed so that the rest of the fountain can be placed in the dishwasher for easy cleaning.

Keep your pet healthy and happy by ordering the Stoneware Pagoda Fountain today. Key Features Dual filtered water falls in two freefalling streams to provide fresh and aerated water for pets 12V submersible pump operates silently and is easily removed Fountain with pump removed can be placed in dishwasher for easy cleaning Holds up to 70 fl oz of water Water Capacity Water Capacity PWW0013708, Grey To calculate the overall star rating and percentage breakdown by star, we don't use a simple average. Instead, our system considers things like how recent a review is and if the reviewer bought the item on Amazon. It also analyzes reviews to verify trustworthiness. Please try again later. R Pierce 4.0 out of 5 stars I am an engineer and inventor and like the way the fountain is designed with one exception. I only had it plugged in ten minutes before I knew for sure that my wife would not put up with the water fountain noise. For those who are bothered by the splashing sound, don't give up on the fountain. See the photos for how to make the simple mod. The 5-inch saucers fit perfectly and are held down by gravity. They do not interfere with function of the fountain at all, but it does mess with the look a bit. You have to choose quiet or pretty; we prefer quiet. Hope this helps folks that can't stand the extra noise. I think the manufacturer should incorporate this feature by widening the bottom of the tower. She tends to drink as absolutely necessary, hence the purchase, but immediately drank her fill. We were shocked. After a few hours though I knew we'd have to make some modifications. This thing is loud. Not "babbling brook" restful but "do I have a plumbing leak!" LOUD. I would randomly notice it and panic Is the toilet leaking! Is that dishwasher! Is the tap running! If you find it restful, wonderful. I fixed it with nice large river rocks, the sound is greatly reduced and they can still hear it. I still hear it while in the kitchen but now not ALL. OVER. THE. HOUSE.

Hammacher Schlemmer Ceramic Pet Fountain The original was a great product but cleanup was a chore with the original's plastic construction and almost seemed designed to be difficult to clean with lots of parts and hard to reach areas. This was my experience with the original even after purchasing the recommended Setup TIE The HS and DW were about equal in set up time. Both have their own little assembly quirks. One reviewer of this product writes at length about the terrible chemical smell of the DW but that wasn't my experience. Both the DW and HS included foam packaging as is to be expected for shipping of fragile items. I ran the fountains through the dishwasher before putting them into service and didn't detect any unusual or potentially harmful toxic odors after the wash cycle. The same is true of the rubber and plastic parts of each unit so this was never an area of concern. Construction DW wins Both have a post for feeding the electric pump cord up through the bottom of the fountain. My first HS arrived with this post piece broken off and the whole bowl had to be replaced. So while I am declaring the DW the winner in this category, be mindful that this post piece is going to be an Achilles heel to both designs so be especially careful in the unpacking, cleaning and assembly process. Design DW wins The HS design does not have the same falling water feature that is more akin to water falling from a faucet. The HS model has water that bubbles up from the center of the fountain and might be a good option for those who don't like the sound of

falling water or otherwise find the DW design too loud as noted in several other product reviews. However, mimicking water falling from the faucet is a good thing in my case and I don't find the DW too loud or otherwise unpleasant. So for my preferences, DW wins this category, but depending on your noise tolerance level preference this could be a point for the HS. Weight DW wins The DW fountain is a little lighter.

The HS design feels more like heavy pottery. Capacity TIE Both compared versions hold about the same amount of water; so this is a draw. The listing photo shows one larger dog using this DW model but neither this DW or the HS are the best options for larger pets. Both work well for cats, and probably for small dogs as well, but a big dog would likely do better with one of the larger versions. Cleaning HS wins The DW has a rubber plug to go around the cord where it emerges from the post. This plug has to be removed and reinstalled with each cleaning and it doesn't seem like a part that will last as long as the other removable parts on this fountain. It seems like PetSafe could have included at least one replacement along with the original purchase as I can't imagine it costs them more than a few cents. The HS has three rubber pads that cover the feet of the top piece where it sits in the bowl. These rubber feet are always under water and magnets for dirt and bacteria growth. While the rubber feet design adds to the cleanup time for the HS model, overall I find the HS reassembly after cleaning to be a bit more straightforward than the DW giving it the edge in this category. Customer Support TIE This category is another tie. During the ten years I used the DW original the pump failed twice and in both instances PetSafe provided a hassle free replacement. Likewise, when the HS arrived with a broken post piece HS customer service cheerfully sent out a replacement. Two quality companies. That makes it 3 to 1 in favor of this DW on my scorecard. In the end both are good products from good companies. If you plan on using a fountain near your television set up or sleeping area, anywhere where the sound of constant falling water could be a distraction, consider going with the HS. Hope that this comparison is helpful to others who might be considering these two models. I rinsed the charcoal filter and foam filter with cold water.

<http://www.liga.org.ua/content/e-flite-40a-esc-manual>