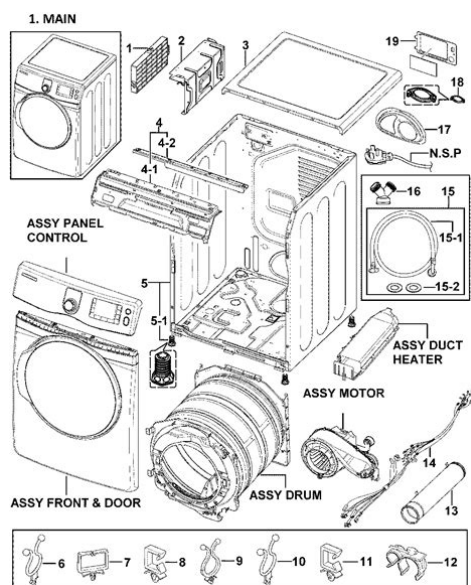


Dv419Aew Xaa Service Manual



File Name: Dv419Aew Xaa Service Manual.pdf

Size: 2736 KB

Type: PDF, ePub, eBook

Category: Book

Uploaded: 3 May 2019, 21:37 PM

Rating: 4.6/5 from 811 votes.

Status: AVAILABLE

Last checked: 16 Minutes ago!

In order to read or download Dv419Aew Xaa Service Manual ebook, you need to create a FREE account.

[**Download Now!**](#)

eBook includes PDF, ePub and Kindle version

[Register a free 1 month Trial Account.](#)

[Download as many books as you like \(Personal use\)](#)

[Cancel the membership at any time if not satisfied.](#)

[Join Over 80000 Happy Readers](#)

Book Descriptions:

We have made it easy for you to find a PDF Ebooks without any digging. And by having access to our ebooks online or by storing it on your computer, you have convenient answers with Dv419Aew Xaa Service Manual . To get started finding Dv419Aew Xaa Service Manual , you are right to find our website which has a comprehensive collection of manuals listed.

Our library is the biggest of these that have literally hundreds of thousands of different products represented.



Book Descriptions:

Dv419Aew Xaa Service Manual

Are you sure to remove this product By continuing to browse or use this site, you are agreeing to our use of cookies. Please share your ZIP Code to find a nearby Best Buy to try out your next phone. Please share your ZIP Code to find a nearby Best Buy location Stainless Steel STS prevents rust and discoloration. Sensor Dry detects moisture levels and stops the cycle when a load is dry. Note If your phone is. If you're running the. Touch Smart Care on the washer or dryer, and then open. Sensor Dry cycles With Sensor Dry, you dont have. Ask a question or start a new topic to get help and advice from our loyal Samsung community. Or Text HELP to 62913 Please contact us via Live Chat for a faster response. Samsung pays for Premium Care during this period. Hold times are long. Includes the roller shaft and mounting clips. As the bearing in the roller wears, it selflubricates so no grease is needed. If the dryer is noisy then one or more of the rollers may be worn. The rollers should be replaced in sets either both front or both rear. Used for hot or cold water. If the dryer no longer heats then the heating element may have failed, but it is not the most common cause. The most common cause for a dryer to stop heating is a blown thermal fuse. Since 1912, weve learned to recognize the most common problems. Do any of these look familiar. Join Repair Clinics VIP email list for 10% off, plus other discounts and tips. Weve got millions of parts, hundreds of brands, and thousands of stepbystep videos— everything you need to find it, fix it and finish the job right. Please use the box above to search for any other information. Just open an Amazon account by signing up as with any website, and when you make an order the default choice will be t. Learn about our response to Covid19 Only had 2 differences in my dryer from the one used in the video, so the video was helpful. <http://aquafilling.com/userfiles/delete-trojan-virus-manually.xml>

- **dv419aew xaa service manual, dv419aew xaa service manual download, dv419aew xaa service manual 2017, dv419aew xaa service manual online, dv419aew xaa service manual 2016, dv419aew xaa service manual free, dv419aew xaa service manual instructions, dv419aew xaa service manual downloads, dv419aew xaa service manual user.**

The one difference was the connections to the front side of the dryer were on the power distribution circuit board located on the left of the dryer under a sheet metal cover. These were harder to disconnect with my fat thumbs. The bigger issue was with removing the front control panel. In the video there doesnt appear to be any clips holding the lower edge of the panel in place, there were 2 plastic clips and 4 plastic tabs. I pulled and pried and the clips broke and in the process cracked the front control housing. The wife was not to happy. Once the panels were removed it was easy to remove the belt from the idler and motor pulley. I didnt use the belt to lift the drum, it s not heavy just a little awkward. To remove the idler bracket I had to use a larger Phillips driver, this screw was locked down tighter than the others, but it works as the pivot for the bracket so you dont want it to back out. Before putting it all back together I used a shopvac to clean out the lint, also removed and cleaned the duct piece between the lint trap and the blower. I also checked the drum support wheels to see that they turned freely. I suggest that if anyone wants to take on this repair to buy the complete idler assembly and new belt. I also purchased a new spring but its not necessary. I would how ever buy the screw that mounts the idler assembly, in removing the screw you could damage the head and make reinstalling it next to impossible. Also wear gloves the sheet metal pieces are sharp. Only had 2 differences in my dryer from the one used in the video, so the video was helpful. I would how ever buy the screw that mounts the idler assembly, in removing the screw you could damage the head and make reinstalling it next to impossible. Also wear gloves the sheet metal pieces

are sharp.<http://www.eindiaart.com/userfiles/delete-transaction-logs-manually.xml>

In process found alot of lint had escaped into inner dryer and had a thick coatingI cleaned out most lint and pulled apart lint trap on front and I then removed the heating elementWill be vigilant with clearing lint screen on everySaturday morning! Less than 24 hours, AMAZEING!! I am in central PA and I believe warehouse was in MD No matter where, the turn around time is incredible.Note Do test all sensors on heating element housing to rule out a sensor failure while you have apart as per theirSaved a ton of money in the process and learned a lot. Should be handy with tools and testing equipment and not be afraid. I am amazed at how simple many appliance repairs end up being once diagnosed and how much companies actually charge to fix. Although an Art Director by trade, I like working with my hands. I'm adept at working with tools and following instructions. In today's disposable society, I prefer fixing things. That said, this has to be the easiest repair I've ever attempted with the largest costsavings versus hiring a professional. My brand new dryer had been in use fewer than six months average 6 loads per week when suddenly the dryer would not heat. The drum would spin, there were no error codes, and the machine behaved as though all was functioning properly, but the clothes would not dry—in fact, they were cold. What the heck I found that reputable repairmen are difficult to find in the Washington D.C. area. Interestingly, some of those that are reputable refuse to work on Samsung products! Who knew After some research, you likely found appliancepartspros.com the same way I did. My research informed me that dryers are actually quite simple machines. There's not a lot that can go wrong with the parts of the machine that perform the actual drying of clothes. I determined by educated guess that my issue was being caused by either a faulty thermistor, thermal fuse, or the thermal fuse assembly or a combination of all three.

I figured since I'm taking the machine apart, I may as well replace all three parts while I'm in there. I made the right call. I had my dryer apart and back up and running in under an hour. Dryer not working Do this Chat with the customer service specialist to make sure you're buying the appropriate parts and while you wait for your parts to arrive, watch the tutorial videos theyre incredibly helpful a few times to familiarize yourself with the project from starttofinish. My dryer stopped working on a Sunday. Thanks to appliancepartspros.com, I was drying laundry again by Tuesday. Insanely fast shipping, superhelpful customer service, and quality replacement parts. I completed the repair three months ago as of this writing and the dryer is still working as it should. Good luck! Although an Art Director by trade, I like working with my hands. Good luck. Learn about our response to Covid19 The instructions below from DIYers like you make the repair simple and easy.Your appliance may differ depending on the manufacturer and model. Your appliance may differ depending on the manufacturer and model. Your appliance may differ depending on the manufacturer and model. For thermal fuse assembly, order DC9600887C.Your appliance may differ depending on the manufacturer and model. Our payment security system encrypts your information during transmission. We don't share your credit card details with thirdparty sellers, and we don't sell your information to others. To hide it, choose Ship in Amazon packaging at checkout. To hide it, choose Ship in Amazon packaging at checkout. Please try again.Please try again.Register a free business account Please try your search again later.When switched on glows red hot and begins to heat the dryer.To calculate the overall star rating and percentage breakdown by star, we don't use a simple average.

Instead, our system considers things like how recent a review is and if the reviewer bought the item on Amazon. It also analyzes reviews to verify trustworthiness. Please try again later. S Crow 4.0 out of 5 stars It saved me a few hundred to do it myself. I just unscrewed the top and front panel. Then the casing for the element was easy to access. Once out it was just a matter of swapping the parts and reassemble. Just take your time and you can do it yourselfBut for comparison, the original lasted

only about 3 years, and the OEM elements are stupid expensive. Ugh. Cant win. Original review Inexpensive, but the first one I received was broken. I thought the second one had failed after 6 months, but turns out it was the thermostat. However, it worked great and was the correct part I needed for my Samsung dryer. I was glad to find it on Amazon for so cheap and have it work perfectly. Good buy and recommended! Compared to the OEM part cost this was a great investment. I haven't noticed any difference in drying times compared to the original. Will buy again if needed. I think they have since improved. I bought this one and Leboo and you can tell the Leboo has much thicker wire. Great for us do it yourselfers! In order to navigate out of this carousel please use your heading shortcut key to navigate to the next or previous heading. Please check your inbox, and if you can't find it, check your spam folder to make sure it didn't end up there. Please also check your spam folder. If you want NextDay, we can save the other items for later. Order by, and we can deliver your NextDay items by. You won't get NextDay delivery on this order because your cart contains items that aren't "NextDay eligible". In your cart, save the other items for later in order to get NextDay delivery. Oops! There was a problem with saving your items for later. You can go to cart and save for later there.

Learn more Please note This is a generic product and not an OEM product and is not covered under any OEM manufacturers warranty. The OEM brand names and logos are the registered trademarks of their respective owners. Any use of the OEM brand name or model designation for this product is made solely for purposes of demonstrating Walmart compatibility. Wish you a great day. About This Item We aim to show you accurate product information. Manufacturers, See our disclaimer Great product, great service. Please note This is a generic product and not an OEM product and is not covered under any OEM manufacturers warranty. Dont spend hundreds of dollars replacing your dryer when all you need is a replacement dryer heating element. EASY TO INSTALL! If you are a DIY person or have experience fixing your dryer, it is pretty easy to replace your old dryer heating element. If not, your local appliance repair shop can do it for you. FITS PERFECTLY! This aftermarket heating element is manufactured to fit the listed models. Please make sure to check your original part to confirm that you are buying the correct product. Specifications Brand Aftermarket Customer Reviews Write a review Be the first to review this item. Ask a question Ask a question If you would like to share feedback with us about pricing, delivery or other customer service issues, please contact customer service directly. So if you find a current lower price from an online retailer on an identical, instock product, tell us and we'll match it. See more details at Online Price Match. All Rights Reserved. To ensure we are able to help you as best we can, please include your reference number Feedback Thank you for signing up. You will receive an email shortly at Here at Walmart.com, we are committed to protecting your privacy. Your email address will never be sold or distributed to a third party for any reason. If you need immediate assistance, please contact Customer Care.

Thank you Your feedback helps us make Walmart shopping better for millions of customers. OK Thank you! Your feedback helps us make Walmart shopping better for millions of customers. Sorry. We're having technical issues, but we'll be back in a flash. Done. You can unsubscribe at anytime. Subscribe Personal information provided may be collected, used and disclosed in accordance with our Privacy Policy Connect with Us Connect with us on your favourite social networks. We'll let you know what we're up to, and you can tell us how we're doing. Does your Samsung dryer not come on or power on at all when you press on any of the control buttons. If you require expert Samsung dryer repair in the Katy, TX, Houston, TX, Cinco Ranch or Richmond, TX metro areas, then you've come to the right place. We fix more Samsung dryers than any appliance repair service company in the metro area. And we have the track record to prove it. Common reasons for Samsung dryer malfunctions include If not, then you may need authorized Samsung dryer repair help so turn to an appliance repair company that has years of experience in reliably fixing all models of Samsung

dryers. In fact, we repair “tub fulls” of dryers and we can repair your dryer today. Call us at Houston Katy Appliance Repair today if you need a Samsung dryer repair expert at 832 3213758. Below is a picture of a newly discovered Samsung dryer failure beginning to appear with frequency requiring a Samsung dryer repair. Therefore, we can have your Samsung dryer repaired and back up and tumbling in no time. So call our local Samsung dryer experts today at 832 3213758. Page 2 features

1. Extra Large Capacity Ultra drying capabilities are at your fingertips. Now you can dry extralarge loads. Our ultralarge 7.4 cu.ft. capacity dryer circulates more air through your clothes, drying them faster for a wrinklefree result.
2. Steam cycle This cycle sprays a small amount of water into the dryer drum after several minutes of tumbling with heat.

It reduces bad odors from clothing that are difficult to remove when washing with water, and also reduces wrinkles.

3. Page 3 safety instructions Congratulations on your new Samsung Dryer. This manual contains valuable information on the installation, use, and care of your appliance. Please take the time to read this manual to take full advantage of your dryer’s many benefits and features. Install the clothes dryer according to the manufacturer’s instructions and local codes. Do not turn on the appliance. Do not touch any electrical switch. Do not use any phone in your building. Clear the room, building or area of all occupants. Immediately call your gas supplier from a neighbor’s phone.

Page 5 The interior of the dryer and exhaust duct should be cleaned periodically by qualified service personnel. This appliance must be properly grounded. Never plug the power cord into a receptacle that is not grounded adequately and in accordance with local and national codes. See installation instructions for grounding this appliance. Do not sit on top of the dryer. Because of continuing product improvements, Samsung reserves the right to change specifications without notice.

Page 6 contents

INSTALLING YOUR DRYER 7 7 8 9 9 9 10 10 11 12 12 13 14 15 15 18 19 20 21 23 24 24 24 25 26 26 26 27 27 27 27 27 27

Tools needed for installation See Dryer Exterior Ducting requirements Important to installer Location considerations Alcove or closet installation Mobile home installation Exhausting Gas requirements Electrical requirements Grounding Electrical connections Connecting the inlet hose Replacement parts and accessories Installation Final installation checklist Dryer Exhaust Tips Door Revers

Page 7 installing your dryer TOOLS NEEDED FOR INSTALLATION SEE DRYER EXTERIOR 01 Installing your dryer Hire a professional to install this dryer properly. If there is a service call performed as a result of poor setup, adjustment, and connection, it is considered the responsibility of the installer.

If you install the dryer you are responsible. Make sure you have everything necessary for proper installation.

1. A GROUNDED ELECTRICAL OUTLET is required. Do not use a smaller duct. Ducts larger than 4 inches 10.2 cm in diameter can result in increased lint accumulation. Lint accumulation should be cleaned regularly. If a flexible metal duct must be used, use the type with a stiff sheet metal wall. Do not use a flexible duct with a thin foil wall. When installing a dryer in a mobile home, provisions for anchoring the dryer to the floor must be made. Locate an area that has adequate fresh air. Gas dryers are equipped with a burner vent for use with natural gas. Check with a qualified electrician or serviceman if you are in doubt as to whether your dryer is properly grounded.

Page 13 ELECTRICAL CONNECTIONS Before operating or testing, follow all grounding instructions in the Grounding section. An individual branch or separate circuit serving only your dryer is recommended.

Page 14 installing your dryer CONNECTING THE INLET HOSE Method1 The dryer must be connected to the cold water faucet using the new inlet hoses. Do not use old hoses.

1. If space permits, attach the brass female end of the “Y” connector to the cold water faucet.
2. Turn the cold water faucet off.
3. Attach the straight end of long hose to “Y” connector.
4. Using pliers, tighten the coupling with an additional twothirds turn. Do not overtighten, as it may damage the coupling.
5. Page 15 REPLACEMENT PARTS AND ACCESSORIES If your dryer requires replacement parts or accessories, contact the dealer from whom you purchased your dryer or the SAMSUNG customer care center at 1800SAMSUNG 7267864.

01 Installing your dryer INSTALLATION Gather the required tools and parts before starting the installation. Read and follow

the instructions provided with any tools listed here. Page 16 installing your dryer 4. Review the Exhausting section before installing the exhaust system.

Install the ductwork from your dryer to the exhaust hood. The crimped end of the duct sections must point away from your dryer. DO NOT use sheet metal screws when assembling ducting. These joints should be taped. Never use plastic flexible exhaust material. Tip for tight installations install a section of exhaust system to your dryer before putting it in place. Page 17 6. Review Gas Requirements section. Remove the pipe thread protective cap. Pipe joint compound must be resistant to the action of any liquefied petroleum gas. 3WIRE system connections 01 Installing your dryer Connect the gas supply to your dryer. Page 18 installing your dryer 4WIRE system connections 1. Remove the center terminal block screw. 2. Connect the ground wire green or unwrapped of the power cord to the external ground conductor screw. 3. Connect the neutral wire white or center wire of the power cord and the appliance ground wire green with yellow stripes under the central screw of the terminal block. 4. Connect the other wires to the outer terminal block screws. Tighten screws. 5. Tighten the strain relief screws. 6. Page 19 DRYER EXHAUST TIPS Plastic or nonmetal flexible duct presents a potential fire hazard. WARNING 01 Installing your dryer 1. Make sure your dryer is installed properly so it exhausts air easily. 2. Use 4" diameter rigid metal duct. Tape all joints, including at the dryer. Never use linttrapping screws. 3. Keep ducts as straight as possible. 4. Clean all old ducts before installing your new dryer. Be sure the vent flap opens and closes freely. Inspect and clean the exhaust system annually. Page 20 installing your dryer DOOR REVERSAL 1. Unplug the power cord. 2. Remove two door hinge screws. 3. Lift the door and remove it. 7. Reassemble the black screw in the other hole. 4. Remove a screw on the Frame Front 9. Reinsert the screw Step 4 on the Frame Front 5. Remove the two screws on the opposite side of the door hinge. 10.

Place the door on the other side and reattach it to the dryer. 6. Remove two screws from the holder lever. 11. Reattach the holder lever. 7. Page 21 operating Instructions, tips OVERVIEW OF THE CONTROL PANEL 1 Cycle Selector 2 6 3 4 5 6 7 8 To select a cycle, rotate the Cycle Selector dial to the desired cycle. The indicator light by the cycle name will illuminate. The Normal, Heavy Duty, Towels, Perm Press, Delicates and Sanitize cycles are Sensor Dry cycles. Sensor Dry automatically senses the moisture in the load and shuts the dryer off when the selected dryness level very dry to damp dry is reached. The estimated time remaining may fluctuate as the cycle progresses. The Drying light will illuminate and remain lit until the cycle is complete. When your dryer is in the cooldown phase, the Cooling light will illuminate. When your dryer is in the wrinkle prevent phase, the Wrinkle Prevent light will illuminate. Page 24 operating Instructions, tips DRUM LIGHT Lights the dryer drum while the dryer is running. It can be set while your dryer is not only running but also when it is stopped. If you do not turn the Drum Light off within 4 minutes of turning it on, it is automatically turned off. CHANGING THE LANGUAGE You may change the language shown in the display from English to French or Spanish. Page 25 RACK DRY Installing the drying rack SUGGESTED ITEMS SUGGESTED TEMP. To shorten drying time. To operate more energy efficiently. Do not operate your dryer without the lint filter in place. Mixed loads of heavy and lightweight fabrics will dry differently, which may result in lightweight fabrics being dry while heavy fabrics remain damp at the end of a drying cycle. Page 27 care and cleaning CONTROL PANEL TUMBLER Remove any stains such as crayon, ink, or fabric dye from new items such as towels or jeans with an allpurpose cleaner. Tumble old towels or rags to remove any excess stain or cleaning substance.

Once these steps are followed, stains may still be visible, but should not transfer to subsequent loads. 03 Care and cleaning Clean with a soft, damp cloth. Do not use abrasive substances. Do not spray cleaners directly on the panel. Page 28 special laundry tips SPECIAL LAUNDRY TIPS Please follow the care label or manufacturer's instructions for drying special items. If care label

instructions are not available, use the following information as a guide. Make sure the item is thoroughly dry before using or storing. May require repositioning to ensure even drying. Be sure the power cord is plugged into a live electrical outlet. Check the home's circuit breaker and fuses. Select a heat setting other than Air Fluff. On a gas dryer, check that the gas supply is on. Clean the lint filter and exhaust duct. Add more items or a few towels and restart the cycle. Dryer load is too large. Remove some items and restart the dryer. Make sure the lint filter is cleaned before every load. With some loads that produce high amounts of lint, it may be necessary to clean the filter during the cycle. Page 31 INFORMATION CODES Information codes may be displayed to help you better understand what is occurring with your Dryer. ERROR DISPLAY MEANING SOLUTION Clean the screen or vent. If the problem continues call for service. If the problem continues call for service. Page 32 appendix FABRIC CARE CHART The following symbols provide garment care direction. The Clothing care labels include symbols for washing, bleaching, drying and ironing, or dry cleaning when necessary. The use of symbols ensures consistency among garment manufacturers of domestic and imported items. Follow care label directions to maximize garment life and reduce laundering problems. Page 33 PROTECTING THE ENVIRONMENT DECLARATION OF CONFORMITY This appliance complies with UL2158. 06 Appendix This appliance is manufactured from recyclable materials.

If you decide to dispose of this appliance, please observe local waste disposal regulations. Cut off the power cord so that the appliance cannot be connected to a power source. Remove the door so that animals and small children cannot get trapped inside the appliance. Page 34 appendix CYCLE CHART Default Cycle Cooling Wrinkle prevent Temp control Sensor dry level Time Time Time Time Normal High Medium Normal dry 44 min 39 min 5 min 90 min Heavy Duty High No change Normal dry 60 min 55 min 5 min 90 min Towels High Medium Normal dry 52 min 47 min 5 min 90 min Perm Press Medium No change Normal dry 34 min 24 min 10 min 90 min Delicates Low No change Normal dry 29 min 24 min 5 min 90 min Sanitize High No change Very dry 60 m Page 35 warranty SAMSUNG DRYER LIMITED WARRANTY TO ORIGINAL PURCHASER This SAMSUNG brand product, as supplied and distributed by SAMSUNG ELECTRONICS AMERICA, INC. Page 36 warranty EXCEPT AS SET FORTH HEREIN, THERE ARE NO WARRANTIES ON THIS PRODUCT EITHER EXPRESS OR IMPLIED, AND SAMSUNG DISCLAIMS ALL WARRANTIES INCLUDING, BUT NOT LIMITED TO, ANY IMPLIED WARRANTIES OF MERCHANTABILITY, INFRINGEMENT OR FITNESS FOR A PARTICULAR PURPOSE. Page 40 características 1. Capacidad extra grande Capacidades de ultra secado al alcance de la mano. Ahora puede secar cargas extra grandes. Nuestra secadora ultra grande, con 7.3 cu.ft. 13 kg de capacidad, hace circular mas aire entre su ropa, secandola mas rapido, para obtener un resultado sin arrugas. 2. Ciclo Steam vapor Este ciclo rocía una pequena cantidad de agua en el tambor de la secadora despues de varios minutos de secado con calor. Page 41 instrucciones de seguridad Felicitaciones por la compra de la nueva secadora Samsung. Este manual contiene informacion importante acerca de la instalacion, el uso y el cuidado del electrodomestico. Lea detenidamente estas instrucciones a fin de aprovechar al maximo los multiples beneficios y funciones de la secadora. No encienda el electrodomestico.

No toque ningun interruptor electrico. No utilice ningun telefono de su edificio. Haga que todos los ocupantes se retiren del cuarto, edificio o area. Comuniquese inmediatamente con el proveedor de gas desde el telefono de un vecino. Siga las instrucciones del proveedor de gas. Page 43 Este electrodomestico debe conectarse a tierra correctamente. Nunca enchufe el cable de alimentacion a un receptaculo que no este conectado a tierra correctamente ni guarde conformidad con los codigos locales y nacionales. Consulte las instrucciones de instalacion para conectar este electrodomestico a tierra. No se siente encima de la secadora. Debido a las constantes mejoras a los productos, Samsung se reserva el derecho de modificar las especificaciones sin previo aviso. Page 44 contenido INSTALACION DE LA SECADORA 20 Herramientas necesarias para la instalacion Consulte Exterior de la secadora Requisitos para el tendido de conductos Importante para el instalador

Consideraciones acerca de la ubicacion Instalacion del electrodomestico en un gabinete o en un hueco Instalacion en casas rodantes Drenaje Requisitos en cuanto al gas Requisitos electricos Conexion a tierra Conexiones electricas Conexion de la manguera de entrada Reemplazo de las piezas y los accesorios Instalacion Lista Page 45 instalacion de la secadora HERRAMIENTAS NECESARIAS PARA LA INSTALACION CONSULTE EXTERIOR DE LA SECADORA 01 Instalacion de la secadora Contrate a un profesional para instalar la secadora adecuadamente. En caso de que sea necesaria una visita del servicio tecnico como consecuencia de una mala configuracion, ajuste y conexion, se considerara responsabilidad del instalador. Si usted mismo instala la secadora, usted sera el responsable. No utilice un conducto de menor tamano. Los conductos de mas de 4 pulgadas 10,2 cm de diametro pueden ocasionar una mayor acumulacion de pelusa. Periodicamente, debe retirar la pelusa acumulada.

Page 47 Si la nueva secadora se instala dentro de un sistema de drenaje existente, debe asegurarse de que **IMPORTANTE PARA EL INSTALADOR** Lea las siguientes instrucciones con detenimiento antes de instalar la secadora. Estas instrucciones se deben conservar para consultas futuras. Cuando se instala una secadora en una casa rodante, se debe tener la precaucion de asegurar la secadora al piso. Consulte a un electricista o tecnico calificado si le surgen dudas acerca de si la conexion a tierra de su secadora es correcta. Los requisitos del servicio electrico pueden encontrarse en la etiqueta con informacion ubicada detras de la puerta. Page 52 instalacion de la secadora **CONEXION DE LA MANGUERA DE ENTRADA Metodo 1** La secadora debe conectarse a la llave de agua fria mediante las nuevas mangueras de entrada. No utilice mangueras viejas. 1. Si el espacio lo permite, conecte el extremo hembra de bronce del conector en forma de "Y" a la llave de agua fria. 2. Cierre la llave de agua fria. 3. Conecte el extremo recto de la manguera larga al conector en forma de "Y". 4. Ajuste la union con dos tercios de giro adicionales utilizando la pinza. Page 53 **REEMPLAZO DE LAS PIEZAS Y LOS ACCESORIOS** Si es preciso reemplazar piezas o accesorios de la secadora, comuniquese con el distribuidor al que le compro la secadora o con el centro de atencion al cliente de SAMSUNG al 1800SAMSUNG 7267864. **INSTALACION 01** Instalacion de la secadora Reuna las herramientas y piezas necesarias antes de comenzar la instalacion. Lea y siga las instrucciones provistas con cualquier herramienta enumerada aqui. Page 54 instalacion de la secadora 4. Consulte la seccion Drenaje antes de instalar el sistema de drenaje. Instale la red de conductos desde la secadora hasta la tapa de drenaje. El extremo con reborde de las secciones del conducto deben apuntar hacia afuera de la secadora. **NO** utilice tornillos con recubrimiento de metal cuando realice el montaje de los conductos. Se les debe colocar cinta a las uniones.