

Reversing the door catch

The door catch can be reversed if necessary. The door is hinged on the right at the factory.

You will need:

- Torx screwdrivers, sizes T10 and T20.
- Medium-sized slotted screwdriver.

These are available from specialist suppliers.

Carefully tighten all screws by hand. They could otherwise be overtightened.

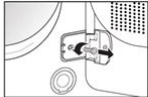
⚠ Do not use a power screwdriver.



To remove the door:

Place the door on something soft (e.g. a blanket) so that it is not damaged.

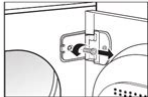
1. Undo the screw for the bottom door hinge.



2. Hold the door firmly and unscrew the top door hinge.

3. Pull the door and the hinge outwards to the front.

4. Lay the door on the blanket.



File Name: bosch maxx 4 user manual.pdf

Size: 1960 KB

Type: PDF, ePub, eBook

Category: Book

Uploaded: 29 May 2019, 14:37 PM

Rating: 4.6/5 from 848 votes.

Status: AVAILABLE

Last checked: 6 Minutes ago!

In order to read or download bosch maxx 4 user manual ebook, you need to create a FREE account.

[Download Now!](#)

43

eBook includes PDF, ePub and Kindle version

[Register a free 1 month Trial Account.](#)

[Download as many books as you like \(Personal use\)](#)

[Cancel the membership at any time if not satisfied.](#)

[Join Over 80000 Happy Readers](#)

Book Descriptions:

We have made it easy for you to find a PDF Ebooks without any digging. And by having access to our ebooks online or by storing it on your computer, you have convenient answers with bosch maxx 4 user manual . To get started finding bosch maxx 4 user manual , you are right to find our website which has a comprehensive collection of manuals listed.

Our library is the biggest of these that have literally hundreds of thousands of different products represented.



Book Descriptions:

bosch maxx 4 user manual

All utilised packaging materials are ecologically harmless and recyclable. Please contribute to a better environment by disposing of packaging materials in an environmentally conscious manner. Dispenser II Detergent for main wash, soaking agent, water softener, bleach or stain remover. Dispenser 2 Additives, e.g. fabric softener or former. Fill at least to lower edge of insert 1. Service flap Opening. Do not wash new coloured washing with other washing. According to colour and degree of dirt White items may become grey. Wash white and coloured items separately. Degrees of dirt Lightly soiled No visible soiling or stains. Loading Items of clothing that have been pretreated with the washing solventbased cleaning agents, e.g. stain remover and dry cleaning spirit, represent an explosion hazard once loaded into the washing machine. Before loading the laundry, rinse thoroughly by hand. Dosing detergent Keep detergents and additives out of the reach of children. Dose detergent according to q the water hardness. You can find out the water hardness from your water utility company. Dispenser 2 Cleaning product, e.g. fabric softener or fabric conditioner do not fill above the lower edge of the insert 1. For maximum spin speeds of the programmes see Page 19. We do not recommend washing these textiles with other rougher textiles. Reduced Ironing Additional Special spin cycle with subsequent fluffing. Start programme q Turn the programme selector to the desired programme see also the separate programme overview. Caution Discoloration of the laundry in subsequent wash cycles cannot be completely ruled out. First, always disconnect the appliance from the power supply. Never clean the washing machine with a water jet. Never clean the appliance with solvents. As required Cleaning the q Use hot soapy water or a mild, non abrasive appliance housing cleaning agent. A little more residual water will flow out. The pump impeller wheel must be able to rotate. <http://seanmore.com/userData/board/como-hacer-manuales-administrativos.xml>

- **bosch maxx 4 user manual, bosch maxx 4 service manual, bosch maxx 4 wfc 2060 service manual, bosch maxx 4 wfc 1600 user manual, bosch maxx 4 user manual, bosch maxx 6 user manual, bosch maxx 4 user manual download, bosch maxx 4 user manual pdf, bosch maxx 4 user manual free, bosch maxx 4 user manual online.**

Clean any residual lye or fluff from the thread of the pump cap and pump housing. Repairs may be carried out by customer service or authorised technicians only. A technician who is called out to give advice will charge you, even if the appliance is still under guarantee. You can find your nearest customer service in the enclosed address list. Safety instructions The washing machine is very heavy. Take care when lifting it. Do not install the washing machine in an area where there is a risk of frost or outdoors. Do not connect to the mixer tap of an unpressurised hot water apparatus. Height difference between the placement area and drainage point maximum 100 cm. Drainage into a wash basin Warning The plug must not block the drain of the wash basin. The mains voltage must correspond to the voltage specification on the washing machine nameplate. Connection specifications as well as the required fuses are stipulated on the appliance nameplate. Bosch Appliances WFL 2060 Washer User Manual. Page 1. Page 2. Page 3. Page 4. Page 5. Page 6. Page 7. Page 8. Page 9. Page 10. Page 11. Page 12. Maxx. WFL 2060 en Instruction Manual and Installation. Conservation Issues. Maxx WFL 2060 Washer pdf manual download. Maxx 4 Washer pdf manual download. Download instruction and installation manuals on our website. Welcome to Bosch home appliances. Discover our full range of energy efficient home appliances and kitchen appliances including many Which best buys. Reload to refresh your session. Reload to refresh your session. BOSCH WFL 1870 MAXX Users Guide Spanish. Maxx 7 VarioPerfect Automatic washing machine

Instruction Manual and. Would you like to try it too Please try again later. To the MAXX 4 washing machine pleased its owner as long as possible, a detailed instruction is included in the kit for it, which helps to ensure proper care and use. <http://www.auto-max.nl/files/como-hacer-tarjetas-de-cumplea-os-manuales.xml>

It is worth noting that it is easier for some people to understand the material presented by means of visualization, therefore, for the explanation of important questions, as a supplement, there are schematic pictures. But before you start using the device, you need to familiarize yourself with the safety and general rules and recommendations of Bosch. Safe operation In accordance with the instructions for the washing machine Bosch MAXX 4 The device must be connected exclusively to cold water supply. The model range is intended for home use only. It is not recommended to allow young children and pets to enter the device. Heating the protective cover glass during washing can reach high temperatures, so it is not recommended to touch it during the process. Touch the control system and the electric cord of the washing machine only with dry hands. To reduce the likelihood of premature failure of the device and cause harm to the health of consumers, it is necessary to comply with all the operating rules of the device, prescribed in the instructions for Bosch MAXX 4.

Installation process features When the washing machine is brought home, First of all you need to remove the transport bolts. Typically, they are installed in the store to maintain the proper state of the internal parts. Four bolts are most commonly used. To get rid of them, you must use SW 13. As for the connection, according to instructions for the Bosch MAXX 4 washing machine there are two ways that the hose can be connected to a water pipe using a separate pipe or by using a mixer located in the bathroom or kitchen sink. In each case, the filling hose must be screwed to a special tee. The second part is connected to the machine. As for the organization of the plum, in any The opening should be located at least 60 cm from the beginning of the floor. It is necessary to use a clamp, which will help reduce the likelihood of leakage.

In accordance with the instruction manual Bosch MAXX 4 WFC2060, the device must be installed in accordance with the level. For these purposes, a special building ruler or a regular glass with water is suitable. The maximum slope should not be more than 2 degrees. First start Manufacturer in the operating instructions for Bosch MAXX 4 recommends the first time to start the device without laundry. You can do this with a special starting agent or a conventional washing powder. Such measures will make it possible to clean the washing machine of industrial dirt and prepare it for loading laundry. Programs and functions of the model series The choice of the necessary program is provided here using a universal handle that turns in both directions. Speaking about the functionality of MAXX 4, with the help of a variety of modes you can cope with serious and old pollution, to wash without any harm delicate things and childrens clothes, sports accoutrements and even shoes. And although each mode has its own temperature, you can change all the settings yourself if necessary. Also, individually, you can initiate a procedure rinsing and spinning. Everything depends on the tasks set by the user. In addition, so that the machine is not strongly vibrated, the number of revolutions can be reduced up to 600. But in this case, the laundry will be more saturated with moisture. If the thing is delicate, then the additional rinse function will always come in handy. The quickwash mode is usually used in the event that clothes or underwear simply need to be refreshed. The instructions for the Bosch MAXX 4 WFC 2063 OE show in more detail the table where each time mode is specified. The maximum washing time is 135 minutes. Launching For those who have this model is not the first washing machine, launches washing will not be very difficult. As a rule, first you need to make sure that it is really connected to the power supply.

<http://www.drupalitalia.org/node/71817>

It happens that because of the rush, consumers are mistaken in choosing a washing program. Do not despair, because you can still choose another mode. To do this, perform the following procedure Move the program selector to zero. We wait for a couple of seconds, then select the program that

was planned to be used earlier. Press the start and the washing machine starts the process in accordance with the newly selected mode. Care In the manual for Bosch MAXX 4, the manufacturer notes that the device will last longer if it is followed by proper care. It is also important to use it solely for its intended purpose. Dosers, where the detergent is placed, The conditioner for clothes also needs to be washed out periodically as the plaque forms in due course, the powder will not be completely washed out from a compartment. Typically, the procedure must be repeated after every four washings. According to the instruction, Bosch MAXX 4 is not it is recommended to use for washing with nonwashing machines. For example, powders for hand washing create abundant foam. Also, you can not use grated finely laundry soap it can clog the powder receptacle. Only a strict compliance with the Bosch MAXX 4 instruction will allow you to evaluate all the advantages and quality of the assembly of the equipment of the leading manufacturer of household appliances. Search results for found ask for a document File Date Descr Size Popular Mfg Model Found in chassis2model Found in repair tips. All manuals on ManualsCat.com can be viewed completely free of charge. By using the Select a language button, you can choose the language of the manual you want to view. Perhaps the users of ManualsCat.com can help you answer your question. By filling in the form below, your question will appear below the manual of the Bosch Maxx 4 WTW83272FG. Please make sure that you describe your difficulty with the Bosch Maxx 4 WTW83272FG as precisely as you can.

<http://gvshaw.com/images/canon-pixma-ip5300-service-manual.pdf>

The more precies your question is, the higher the chances of quickly receiving an answer from another user. You will automatically be sent an email to inform you when someone has reacted to your question. Manual Maxx 7 VarioPerfect em formato PDF. Page All manuals on ManualsCat.com can be viewed completely free of charge. By using the Select a language button, you can choose the language of the manual you want to vi User manual Bosch Maxx 7 VarioPerfect is a certain type of technical documentation being an integral element of any device we purchase. These differ from each other with the amount of information we can find on a given device e.g. Bosch Maxx 7 VarioPerfect. Obviously, if a manufacturer considers appropriate to provide us with higher amount of information regarding the device Bosch Maxx 7 Maxx 4 Washer pdf manual download. Also for Wfc24View and Download BOSCH MAXX CLASSIC instruction manual online. As you can see by the diagram, there are some areas of the mind that operate together to process different types of information. If we could figure out what those are, wed have the ability to unlock new therapies for many brain related diseases. There are a couple of distinct types of information that the brain processes. We are aware that the frontal lobes have the ability to process emotion and it also allows the person to process sight, noise, touch, odor, taste, as well as touch. Additionally, there are a few other functions like spatial orientation, handson manipulation, judgment, and judgment and decision making. All of this is extremely important because without it, we cannot work properly. Each portion of the brain works together to execute different tasks. One of the most important functions for every kind of function is data flow. You have to understand that this is a very large part of brain function and several times its hard to separate out it. The first step in learning what the mind does is to know how it works.

<http://abqwinair.com/images/canon-pixma-ip6600d-manual.pdf>

The individual will then be able to think of therapy ideas. When one part of the brain malfunctions, the other areas of the brain are influenced. The men and women who suffer from autism, schizophrenia, and Alzheimers are still just a few of the examples of people who have issues with the frontal lobes. The men and women that are affected are not able to comprehend whats happening about them and they can not process the information thats received. This causes learning disabilities, memory loss, and problem with judgement. The person could be able to read, but it is difficult for them to process the information properly. Provided that they have some previous

knowledge of how the brain works, they will have the ability to understand and find out more about the topic. Reading is a very complex task that requires a great deal of information being processed. Its also an extremely tough thing to do alone. The individual who is able to remember preceding knowledge and be able to access it when needed will have the ability to perform better than the person who doesnt have previous knowledge. By obtaining the understanding, the individual will be able to see the general image. These people will get a better probability of earning decisions. Its easy to learn each of the different ways that the brain functions, but its very tough to learn each of the locations that work together to create them. As long as the person has a fundamental comprehension of the brain, theyll have the ability to become successful with various treatments for different brain associated troubles. There are a lot of things that you will need to understand in order to have a successful car restoration project. Read on to learn more on how to correctly install your electric system and accessories for better performance and endurance. The first thing that you will have to do is be sure you know the installation procedure for the carswire harnesses.

These arent always needed by the majority of vehicle owners, but there are many reasons why they are regarded as a necessity. These types of cables are connected to the automobiles air conditioning, engine, and other auxiliary systems. Knowing the use of these wires will allow you to understand how to examine a Bentley wiring diagram, which ought to help you if you ever need to replace them with newer wiring. After you have checked to see if you have all of the necessary cables installed properly, it is time to start looking at your car. You might want to start by finding each of the components that are related to your ac system, such as the radiator and the coolant hoses. Youll also have to understand what all the wires connected to the radiator are and what the colours mean, such as black, reddish, or white. You can find out about the position of each of these wires by marking them on your Bentley wiring diagram. Once youve done this, you need to look at the bulbs in your headlights. There are two types of bulbs that are employed in the headlights of almost any car or truck. 1 type of bulb is generally regarded as blowoffplug bulbs, which are located next to the battery cables on the instrument panel. This really is the one which you will need to look for. When you have located the blowoffplug bulb, then look over the rest of the bulbs on the index panel, such as the one for your turn signal. Next, it is time for to the radiator. Youll have to find the proper spot to the engine oil pan. Normally, the location of this radiator is indicated on the radiator shield. This shield is usually connected to the cars framework, but occasionally it may also be affixed to the motor bay itself. You may also need to utilize the oil drain pan to test for any leaks of any kind. The Bentley wiring diagram will let you know precisely where this item is located and if you have an older dipstick, then you are able to readily find it.

www.hediyevideo.com/wp-content/plugins/formcraft/file-upload/server/content/files/1626c33cfa65f7--cannondale-jekyll-2005-manual.pdf

In the end, if you find that the oil pump has difficulty, you might want to replace the whole oil pump assembly. However, you can even take apart the oil pump assembly to see if there are any damaged or loose connections. This should help you figure out whether or not the oil pump ought to be replaced. By following these steps, youll be able to receive the tools and information that you need to correctly understand how to read a Bentley wiring diagram. Be sure to keep in mind the data that you learn and do your best to use it to your car. If youve taken the time to find out the correct way to see a Bentley wiring diagram, then you will get a better chance of restoring your Bentley to its original condition. And by having access to our ebooks online or by storing it on your computer, you have convenient answers with Bosch Maxx 4 User Manual. To get started finding Bosch Maxx 4 User Manual, you are right to find our website which has a comprehensive collection of manuals listed. Our library is the biggest of these that have literally hundreds of thousands of different products represented. I get my most wanted eBook Many thanks If there is a survey it only takes 5 minutes, try any survey which works for you.

<http://www.drupalitalia.org/node/71818>