

File Name: canon lide 35 scanner user manual.pdf

Size: 2371 KB

Type: PDF, ePub, eBook

Category: Book

Uploaded: 27 May 2019, 18:43 PM

Rating: 4.6/5 from 649 votes.

Status: AVAILABLE

Last checked: 19 Minutes ago!

In order to read or download canon lide 35 scanner user manual ebook, you need to create a FREE account.

[**Download Now!**](#)

eBook includes PDF, ePub and Kindle version

[Register a free 1 month Trial Account.](#)

[Download as many books as you like \(Personal use\)](#)

[Cancel the membership at any time if not satisfied.](#)

[Join Over 80000 Happy Readers](#)

Book Descriptions:

We have made it easy for you to find a PDF Ebooks without any digging. And by having access to our ebooks online or by storing it on your computer, you have convenient answers with canon lide 35 scanner user manual . To get started finding canon lide 35 scanner user manual , you are right to find our website which has a comprehensive collection of manuals listed.

Our library is the biggest of these that have literally hundreds of thousands of different products represented.



Book Descriptions:

canon lide 35 scanner user manual

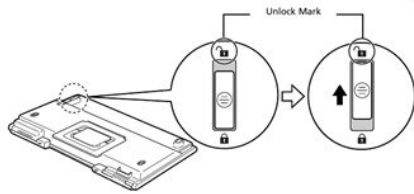


After you finish reading this guide, store it in Please read this guide before operating this scanner. After you finish reading this guide, store it in a safe place for future reference. Setup and Scanning. The socketoutlet shall be installed near the equipment and shall be easily accessible. Use of a shielded cable with the ferrite cores provided with the scanner is necessary to comply with the technical requirements of the EMC Directive. Make sure to log in with the first created administrator to install the software. You cannot install the software when logged in using added administrator accounts. Place the CanoScan Setup Utility CDROM in the drive. You may be unable to set the lock. You can operate the scanner in this condition without problems. Place a photo or a picture on the glass by aligning its top edge with the alignment mark, and close the document cover. Place an item on the scanner before pressing a button. The scanner may not work if you upgrade to Windows XP with these programs still installed. After upgrading to Windows XP, reinstall ScanGear CS and CanoScan Toolbox according to the steps on page 4. If any problems occur with the scanner, you will need this information when you contact our Customer Support Help Desk. Be sure to record the information and store it in a safe location. This page requires Javascript. Modify your browsers settings to allow Javascript to execute. See your browsers documentation for specific instructions. To install your download click on the name of the downloaded file. Scroll down to see your support options. You can also click one of these links to search our extensive Knowledge Base or visit the Canon Community Forum. The driver may be included in your OS or you may not need a driver. <http://clearpatth.com/userfiles/driving-manual-online-game.xml>

- 1.0.

Preparing the Scanner**Unlocking the Scanner**

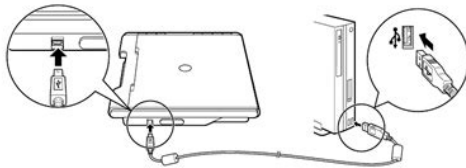
- 1 Peel the seals off the scanner.
- 2 Slide the lock switch on the bottom of the scanner toward the unlock mark (🔓).



- Handle the scanner with both hands. Be careful not to drop the scanner.
- Always lock the scanner when carrying or transporting it.

Connecting the Scanner

- 1 Connect the scanner to your computer with the supplied USB cable.



- Only use the USB cable provided with the scanner. Use of other cables may lead to a malfunction.
- When the scanner is connected to the USB 1.1 port on Windows XP and "HI-SPEED USB Device Plugged into non-HI-SPEED USB Hub" message appears, ignore the message. The scanner operates in this condition without problems.
- The scanner does not have a power switch. The power is activated as soon as the computer is turned on.

3

Recommended Drivers File Name Date File Size Optional Drivers File Name Date File Size
 Recommended Software File Name Date File Size Optional Software File Name Date File Size
 Recommended Manuals File Name Date File Size Optional Manuals File Name Date File Size

Warranty repair or replacement shall not extend the original warranty period of the Product. A dated proof of purchase is required at the time of warranty service. A copy of your dated bill of sale will satisfy this requirement. This warranty does not cover any accessories, or any consumables, such as paper or ink cartridges, as to which there shall be no warranty or replacement. Repairs of such Canon brand peripheral equipment shall be governed by the terms of the Separate Warranty. The sole warranty, if any, with respect to such nonCanon brand items is given by the manufacturer or producer thereof. Without limiting the foregoing, dropping the Product, scratches, and abrasions will be presumed to have resulted from misuse, abuse or failure to operate the Product as set forth in the users manual or other documentation for the Product. The name and telephone number of the ASFs near you may be obtained from Canon USAs Web site at www.canontechsupport.com or by calling the Canon USA Customer Care Center at 18008284040, or any time while speaking to a technical support person. A Product covered by this limited warranty will be repaired or exchanged, as determined by Canon USA, and returned without charge by the ASF. If the problem cannot be corrected over the telephone, and you elect the InstantExchange option, a reference number will be issued to you. You will be asked for the Product serial number and other information pertaining to your Product and for a shipto location for the replacement Product must include street address. After receipt of the replacement Product with instructions and a prepaid waybill, follow the enclosed instructions on how to ship your product to the Canon USA repair facility. <http://www.doctorbiokon.com/userfiles/driving-manual-on-mario-kart-wii.xml>

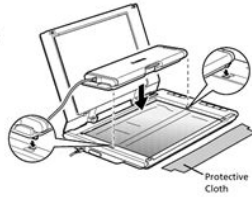
Scanning Film

This scanner can scan 35 mm film strips (6 frames at a time). Follow the procedure below when scanning film.

- Make sure the document glass is wiped clean before placing the film adapter unit on the scanner.
- Handle the film adapter unit carefully to avoid damaging the glass panel.
- Handle film strips carefully to avoid scratching or leaving fingerprints on them.

1 Open the film adapter unit by the center latch and remove the protective cloth. Detach the cable from the retainers on the side of the film adapter unit.

2 Open the document cover and set the film adapter unit on the document glass. Align the dots on the film adapter unit and the dots on the scanner (labeled [FAU]) to set the unit in place.



3 Connect the cable to the connector on the side panel of the scanner, then gently close the document cover.



You need to calibrate the scanner before scanning film for the first time. Do not place a film strip in the film adapter unit at this point as it is not required for calibration.

4 Start ArcSoft PhotoStudio, then start ScanGear. Follow the steps 2 to 4 in "Try Scanning" on page 4.

5 Select [Negative Film (Color)] or [Positive Film (Color)] in [Select Source] to match the type of film you are scanning, and then click [Preview].

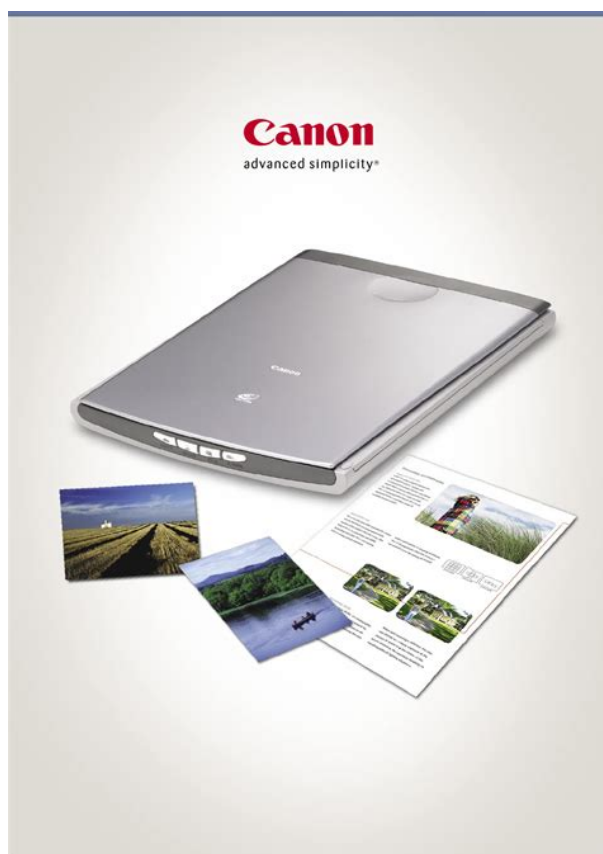


6

Your Product must be returned in the shipping carton in which the replacement Product was packed and include the reference number, A COPY OF YOUR DATED PROOF OF PURCHASE BILL OF SALE, and a complete explanation of the problem. Canon USA does not guarantee same day shipment in the event of the occurrence of factors beyond its reasonable control. The replacement Product you receive may be a refurbished or reconditioned unit and will be covered for the balance of the period remaining on your original limited warranty. Warranty repair or replacement shall not extend the original warranty period of the Product. The replacement Product you receive may be a refurbished or reconditioned unit and will be covered for the balance of the period remaining on your original limited warranty. Please read this guide before operating this scanner. After you finish reading this guide, store it in a safe place for future reference. Ask your question here. Provide a clear and comprehensive description of the issue and your question. The more detail you provide for your issue and question, the easier it will be for other Canon CanoScan LiDE 35 owners to properly answer your question. Ask a question About the Canon CanoScan LiDE 35 This manual comes under the category Scanners and has been rated by 1 people with an average of a 9.5. This manual is available in the following languages English. Do you have a question about the Canon CanoScan LiDE 35 or do you need help. Ask your question here Canon CanoScan LiDE 35 specifications Brand ManualSearcher.com ensures that you will find the manual you are looking for in no time. Our database contains more than 1 million PDF manuals from more than 10,000 brands. Every day we add the latest manuals so that you will always find the product you are looking for. Its very simple just type the brand name and the type of product in the search bar and you can instantly view the manual of your choice online for free. ManualSearcher.

com If you continue to use this site we will assume that you are happy with it. Read more Ok. Quality scans, the simple way. And at just 38mm thick, the CanoScan LiDE PDFs that can be emailed and stored easily. Save time scanning This mode can scan multiple USB 2.0 HiSpeed. CanoScan LiDE 35 Scanner Specifications OS Mac OS X native mode only 10.1.3 10.1.x, Display 32,000 LiDE 35 is your indispensable, Copy, Scan. PDF File, Email. Scanner, USB Cable, Quick Start Guide, Upright ScanSoft OmniPage SE7, Adobe Acrobat Reader and. QARE level 2 technology removes dust The one year warranty can be upgraded to 3 years for a minimal cost Canon Australia Pty. Ltd. North Ryde, NSW

2113, Australia. Freecall 1800 021 167States and in other countries. The USBIF logos are trademarks of Universal Serial Bus Implementers. Forum, Inc. All other trademarks are the property of their respective owners. Canon New Zealand Limited. Akoranga Business Park. Akoranga Drive. Northcote, Auckland, New Zealand. Telephone No 0800 222 666MultiScan mode. File Type Extension pdf. PDF Version 1.4. Linearized Yes. Create Date 20040730 104712Z. Trapped False. Creator Adobe InDesign CS 3.0.1. Producer Adobe PDF Library 6.0. Page Count 2. About uuid710adc82ef4411d89444000a95bb184c. Creation Date 20040730 104712Z. Creator Tool Adobe InDesign CS 3.0.1. Rendition Class proofpdf. Derived From Instance ID f836d2a2e3a711d88b7eae0ac285e34. Derived From Document ID adobedocidindd4b0cab36dd6111d8a9f38d727636a5dc. Document ID adobedocidinddf836d2a3e3a711d88b7eae0ac285e34. Manifest Link Form ReferenceStream, ReferenceStream, ReferenceStream, ReferenceStream, ReferenceStream, ReferenceStream, ReferenceStream, ReferenceStream, ReferenceStream, ReferenceStream, ReferenceStream, ReferenceStream. Color and monochrome images can be scanned. The CanoScan will adjust automatically to correct color and remove lint and other imperfections from your photographs and documents for the best possible result. Be the first to ask a question!



<https://www.becompta.be/emploi/bosch-maxx-classic-manual-e3>

You might not need every tool for every procedure. Its pushbutton technology automates the scanning process, and one simple cable provides both power and a USB connection, reducing the number of wires around your desk. The USB 2.0 HiSpeed interface¹ enables incredibly fast image transfers to your computer, with the fastest possible scanning speeds. Previews of your scans are ready in approximately 9 seconds. The efficient LiDE 35 scanner also delivers highquality scanning performance, with a maximum 1200 x 2400 color dpi resolution and 48bit color depth, for over 281 trillion possible colors. Automatic retouching and enhancement technology automatically removes much of the dirt and scratches that may appear on your originals. It even autocorrects tone and

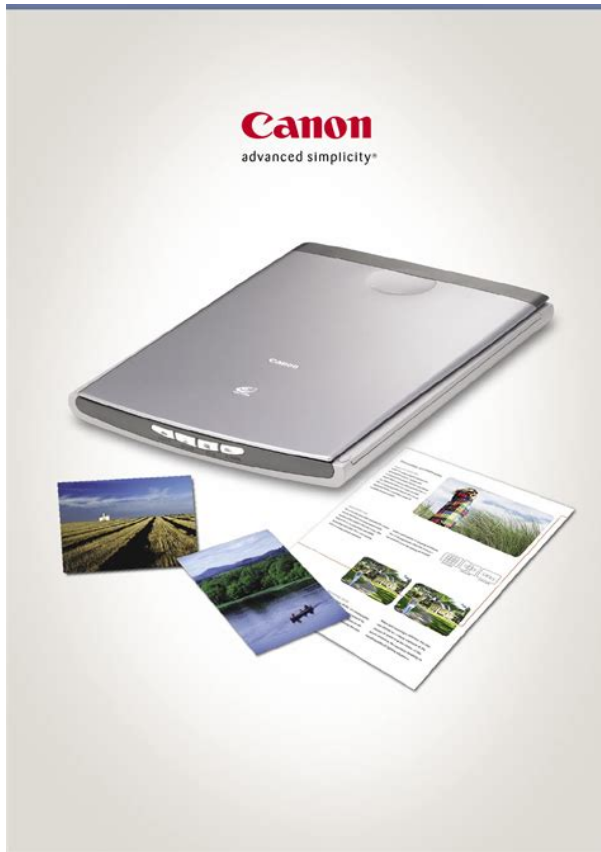
optimizes highlights and shadows. The result Your scans will yield cleaner, more robust images, turning old photos into new. And to help you organize these photos, the LiDE 35 scanner comes with a powerful suite of applications featuring ArcSoft PhotoStudio software. EOS M and EOS R Full Frame mirrorless ranges deliver the power of DSLR in the body of a compact camera. Stylish and sophisticated, It is so sleek and light that with the And because it draws all the power it PDF function. It includes A suite of powerful PhotoStudio for image editing and ScanSoft Omnipage SE for Optical Character Recognition. It also provides single cable The LiDE 35 also has Mac. Used Good Online tracking provided. Clean unit tested and works comes with original packaging minor wear. No install CD Please try again. Please try again. Please choose a different delivery location. In order to navigate out of this carousel please use your heading shortcut key to navigate to the next or previous heading. Support Mac and PC Please try your search again later.

<http://harjac.com/images/bureau-of-tenncare-policy-manual.pdf>



Whether you're archiving old family heirloom photos or emailing a print article to a friend across the country, the Canon LiDE 35 scanner does what you need it to do, easily, without taking up much valuable desktop space. A patented ZLid design allows you to smoothly accommodate thicker originals like magazines and yearbooks, even though the scanner itself measures just 1.5 inches thick. A stand is included to store it in an upright position, and a single cable supplies power and a USB connection. Even better, the cables included in the box. Both color and monochrome images come through cleanly, thanks to a 1,200 optical dpi and an interpolated resolution of 9,600 x 9,600 dpi. The included pack of scanning software provides you with plenty of options for storing, sending, and retouching; the scanner will automatically take care of scratches or lint on your originals, freeing your time to let you organize rather than repair them. Canon includes a one-year warranty covering parts and service. What's in the Box CanoScan LiDE 35 scanner, ZLid top, USB cable, scanner stand, CanoScan Setup CD-ROM, instructions, warranty information Its pushbutton technology automates the scanning process, and one simple cable provides both power and a USB connection, reducing the number of wires around your desk. The USB 2.0 HiSpeed interface enables incredibly fast image transfers to your computer, with the fastest possible scanning speeds. The efficient LiDE 35 scanner also delivers high-quality scanning performance, with a maximum 1,200 x 2,400 color dpi resolution and 48-bit color depth, for over 281 trillion possible colors. Features One cable for USB and power Advanced ZLid expansion top for scanning bulky items USB 2.

<https://gameanglinginstructors.co.uk/images/burgess-bandsaw-manual.pdf>



0 HiSpeed for fast scanning speeds 48bit for over 281 trillion possible colors Four easy buttons to Scan, Copy, EMail or create PDF files Automatic retouching and enhancement for photos Four easy buttons make it simple to scan a photo, copy a document, prepare material for an email or create a PDF file. Just position your original, select the use for the image, and in seconds your scan is finished. The LiDE 35 scanner automates the entire process, so you can get more done. Also, please make sure you can download updated driver as driver that comes on installation CD is most likely outdated To calculate the overall star rating and percentage breakdown by star, we don't use a simple average. Instead, our system considers things like how recent a review is and if the reviewer bought the item on Amazon. It also analyzes reviews to verify trustworthiness. Please try again later. JK 5.0 out of 5 stars Very fast, reliable, and compact. I can get a good quality grayscale scan in less than 10 seconds. The fact that its powered off the USB port is extremely convenient ended up returning a scanner and replacing it with this because of this feature. Id highly recommend this. Cannot comment on photo scanning as I havent done this yet use a digital camera anyway.I need to prepare class presentations and this scanner works quickly and effectively to scan the diagrams I need to have scanned. It is handy to use because it does not have a separate power supply to haul around. In fact I have one of these scanners at home and at school.After having this for 2 weeks, I have not been able to perform 2 scans in a row. Actually Ive only been able to scan successfully twice. The motor runs, and strains, then cuts out. The scan bar is noticeably cocked. The manual is indecipherable and useless. Calling the support number results in a 20 minute wait with no actual help rendered. Restarting XP does not help. Buy ANYTHING else.This is a fine product that I hope lasts for years.

The scanner and software are a tremendous value for the money. While this is not a full blown professional scanner it is great for what it was made for getting printed data onto your computer quickly, easily, and cheaply while substituting somewhat for a copy machine and doing some graphics work. The included CanoScan Toolbox software makes the scanner do simple functions with ease. You can shrink and enlarge by 25% to 400% or custom % size. The 75300 dpi setting works fine but the 600 dpi copy function locks up my system and is too slow and the files are too big for my

liking anyway a switch to the HP print language driver away from the HP postscript driver on my HP4500 color laser printer seems to have fixed this problem. A 300 dpi takes about 30 seconds. Reasonable times compared to most cheap home copiers I've used but not blazingly fast. You have to add your printer's print time to get the total time to make a copy. The copy quality is almost up to a regular copy machine but not quite unless maybe you spend time tweaking the settings. There is a tendency to get a slightly gray rather than white margin with the 150dpi copy that seems to go away on the 300 dpi copy. This could also be due to a smaller bulb in this small scanner versus the larger bulbs in normal copy machines. As I say with some adjustments to the software and at 300 dpi it usually goes away but I just want to automatically copy without adjustments. The 24 meg is a slow print even from my postscript HP 4500 color laser. The pdf is more efficient. This is of great help to speed emails and get them through servers that don't allow large files. It also will save the file in a folder so you can use this small size jpeg for other uses. The ArcSoft program is needed to get to 1,200 dpi since the CanoScan tool box maxes out at 300 to 600 dpi depending on options. This is okay since scanning is slow past 300 dpi anyway and the files get big.

<https://www.xcelsus.de/wp-content/plugins/formcraft/file-upload/server/content/files/162720a7d146e7---bravilor-bonamat-bolero-manual.pdf>

To copy newsprint Try Grayscale scanning and lighten up the adjustment a bit. Physically The buttons on the front are reassignable but I don't know why you would want to. They are too hard to read from their low position. The top has a flimsy but adequate hinge. It is not made to scan film negatives or slides. I tried both and it just won't. Stick to paper and printed pictures. Install on windows XP was simple. I have a USB connection straight off my modern made within the last 2 years Intel motherboard and have not had USB problems as others have commented. You might need the Service Pac 2 XP update. In my experience, when scanning is happening, I can't do anything else, that is I can't use other software or operating system functions, if I do Windows XP will lock up and I have to restart. To beat this scanner you have to spend more money like for a medium line Epson Photo scanner and then you would not have the convenient copier business software according to reports that I've read. It is not a full substitute for a copy machine but is fine for most home users. Compared to the HP AllInOne that it replaces for me the Cannon is fun to use. The HP's menu system was a mess always jumping back to the beginning, the machine kept telling me the unit was busy when I pressed the copy key a second time rather than using memory to do successive scans, it had cheaply made plastic hinges which broke on the document feeder, it had software problems on Mac, and HP's support is waning because they require serial number and invoice information just for simple support questions. goodbye HP. hello Cannon. Thank you Cannon and Brother for a great substitutes. Additional Recent color graph scans show very good color differentiation even with reds which surprised me given the low cost. The LIDE35 installed and worked with no problems. The quality of my first scan was much better than any done with the Paperport. I bought this unit because it was cheap and small.

It is compact enough to travel with a laptop. USB power means you don't have the weight, mess, and need for an outlet that a wallwart powered scanner has. This is a big plus if you are traveling. Computer bags seem to grow in size and weight when you are running across O'hare airport trying to catch a plane on the other side of the terminal. Wallwarts require power strips and make a mess in hotel rooms. The LIDE technology looks good to me. I have had 4 previous scanners. They all died because the CCFT lamp went South after a year of moderate use. LEDs should last much longer. I found the color quality and balance of LIDE better than the CCFT scanners I had used. It is really nice to be rid of the lamp warmup warnings and delays. Buttons on the front are more of a problem than a feature for me. I usually operate scanners through the scanner control software, and edit with photoshop. Accidentally hitting a button wastes more time than using it for its intended purpose ever saved. I would actually pay a few bucks more to have a scanner that didn't have buttons. Other

things that would improve the LiDE35 are Make it even thinner and lighter. A lighter thinner USB connection cable. Several aftermarket cables are more compact. Over all I feel this was a bargain. It works better than any other scanner Ive had and will probably last longer since there is no CFFT. Canon did a good job on the LiDE 35. Very good, and it is just right for my needs. Sorry, we failed to record your vote. Please try again. We delete comments that violate our policy, which we encourage you to read. Discussion threads can be closed at any time at our discretion. Stylish and sophisticated, It is so sleek and light that with the And because it draws all the power it PDF function. It includes A suite of powerful PhotoStudio for image editing and ScanSoft Omnipage SE for Optical. EOS M and EOS R Full Frame mirrorless ranges deliver the power of DSLR in the body of a compact camera. AMD Athlon.

Pentium II 233MHz or higher. 128 MB. USB port standard equipped Additionally the following Adaptec cards. ScanSoft OmniPage SE does not support Win 98 first edition. USB and USB 2.0 HiSpeed standard equipped port only supported. Native mode only supported. The scanner also features QARE The clip on vertical stand supplied saves valuable A clever Zlid accommodates the scanning of bulky A contemporary metal finish completes a sleek With its intuitive interface, Moreover, originals can be spread out Caere OmniPage SE powerful, marketleading Optical Character Recognition application ArcSoft PhotoStudioTM 5.5 image editing program featuring automatic colour Be the first! New to ePHOTOzine Join Today! By using our service, you agree to our use of cookies. OK Learn more. We look forward to your challenge! In commemoration of this milestone, we have created a special website celebrating its 50year history. Gen3 office multifunction devices. All the Canon manuals and user's guides are available for free view without any registration. You can also download the manual as PDF to your computer. Enter your email and subscribe to our newsletter. You may download and use the Content solely for your personal, noncommercial use and at your own risks. Canon shall not be held liable for any damages whatsoever in connection with the Content, including, without limitation, indirect, consequential, exemplary or incidental damages. You shall also not and shall not let others reproduce, modify, reformat or create derivative works from the Content, in whole or in part. Support for Scanners. CanoScan LiDE 25. CanoScan LiDE 30. CanoScan LiDE 35. CanoScan LiDE 50. CanoScan LiDE 60. CanoScan LiDE 70. CanoScan LiDE 80. CanoScan LiDE 90. CanoScan LiDE 100. CanoScan LiDE 110. CanoScan LiDE 120. CanoScan LiDE 200. CanoScan LiDE 210. CanoScan LiDE 220. CanoScan LiDE 300. Canon CANOSCANLiDE 80 User Manual View and Download Canon Lide 20 user manual online. Lide 20 Scanner pdf manual download.

Canon canoscan lide 25 quick start 2 pages Scanner Canon LiDE200 User Manual. User manual 268 pages Scanner Canon LiDE110 Brochure. Brochure 8 pages Scanner Canon CanoScan LiDe 50 Quick Start Manual Quick Start Guide GfK Utilize Manuals Manuals. Download a user manual for your Canon product. Drivers. Drivers Drivers. Download drivers for your Canon product. Canon CanoScan LiDE 25. Select your support content. Utility CDROM. Non fourni ave c le modele du CanoScan LiDE 25 de st ine a lAmerique lat i ne 0307B007AA. 2. CanoScan LiDE 25 Driver Download Canon Software Download drivers, software, firmware and manuals for the CanoScan LiDE210. We have confirmed that the following phenomenon may occur during use of the EOS1D X Mark III digital SLR camera. A new firmware release is planned for early April; once the new firmware is ready, we will make an announcement on our website. Support Canon Indonesia Dec 25, 2017 How to recover data from a hard drive stuck heads buzzing, clicking, etc Duration 1028. DIY Perks Recommended for you Canoscan lide 25 scanner WIA download Microsoft Community cano scan lide 25 free download CanoScan LiDE 25, Canon CanoScan LiDE 20, CanoScan LiDE 30 ScanGear CSU, and many more programs CanoScan LiDE 35 iFixit The Free Repair Manual Free Canon CanoScan LiDE 25 drivers for Windows 7. Found 18 files. Select driver to download. DriversCollection.com. Available drivers Add Canon CanoScan LiDE 25 to your hardware list Canon CanoScan LiDE 25 manuals. Windows 7, Windows 7 64bit, Windows Vista. In principle, Canon shall

change or delete the contents of this guide without prior notice to CanoScan LiDE 35 Driver Free Download Download canoscan toolbox 5.0 windows 10 for free. System Utilities downloads CanoScan Toolbox by Canon Inc. Canon CanoScan LiDE 220 Flatbed Scanner 4800 dpi Optical Aug 31, 2019 CANON LIDE 700F MANUAL PDF Quick start guide Read online or download PDF Canon CANOSCAN LIDE F User Manual.

Canoscan lide f, Download Canon MP Navigator EX for CanoScan LiDE 110 4.03 for CanoScan D646U Color Image Scanner Users Guide. 2 How to Make Best Use of the Manuals using the scanner for the first time. Printed Manual CanoScan D646U Quick Start Guide Detailed information on how to use Canon Plugin Module CSU. Canon Plugin Module CSU Users Guide Electronic Manual 25 Aspect Ratio Canon Lide 700f Manual WordPress.com Quick Start Guide this guide Additional Documents CanoScan Setup Utility CDRom ScanGear CS Scanner Driver It allows you to scan and load images from the scanner. CanoScan Toolbox Scanning Utility Program It allows you to scan, save, or print images easily CanoScan LiDE 110 not working CorelDRAW Community The CanoScan LiDE 400 is a full color image scanner made for scanning photos and documents in high resolution. With the CanoScan LiDE 400 high quality scanning has never been easier. With 8 second high speed scanning 1, 5 builtin EZ buttons and 4800 x 4800 dpi resolution 2 CANOSCAN LIDE 25 FOR WINDOWS 7 64BIT DRIVERS FOR 23.27MB Ebook canoscan lide 25 user manual PDF Full Ebook By Glynda Cruz FREE DOWNLOAD trying to find canoscan lide 25 user manual PDF Full Ebook This is the best area to right of entry canoscan lide 25 user manual PDF Full Ebook PDF File Size 23.27 MB before promote or repair your product, and. For job or play, the smooth CanoScan LiDE 60 Color Photo Scanner is a onestop scanning maker. 4 simple switches automate the scanning process, making it basic to check, copy, and also develop email accessories or PDFs. Easy Driver Pro makes getting the Official Canon CanoScan LiDE 25 Scanner Drivers For Windows 10 a snap. Easy Driver Pro will scan your computer for missing, corrupt, and outdated Drivers. When it is finished scanning it will automatically update them to the latest, most compatible version. Doubleclick the Scanning Guide icon to view the manual.

To read the User's Guide for CANON CanoScan LiDE 300 Flatbed Scanner Fast Delivery 23.27MB Ebook canoscan lide 25 user manual PDF Full Ebook By Glynda Cruz FREE DOWNLOAD trying to find canoscan lide 25 user manual PDF Full Ebook This is the best area to right of entry canoscan lide 25 user manual PDF Full Ebook PDF File Size 23.27 MB before promote or repair your product, and. Drivers for Canon CanoScan LiDE 25 Scanner for Windows 8 Have a look at the manual Canon scanner CanoScan LiDE 210 User Manual online for free. It's possible to download the document as PDF or print. UserManuals.tech offer 1335 Canon manuals and user's guides for free. Share the user manual or guide on Facebook, Twitter or CANOSCAN LIDE 25 TWAIN DRIVER Any Drivers Info Sep 14, 2010 Question Q canoScan Lide 25 More Less. Apple Footer. This site contains user submitted content, comments and opinions and is for informational purposes only. Apple may provide or recommend responses as a possible solution based on the information provided; every potential issue may involve several factors not detailed in the conversations CanoScan LiDE 25 Support Download drivers, software Jun 09, 2018 PC Tutorijali za Windows, XP, 7, 8, Office, Mreze, phpBB. Use of parts, media, software or supplies other than those sold by Canoscan lide 25 for windows 7 64bit USA including nonCanon ink cartridges or refilled ink cartridges, that cause damage to the Product or cause abnormally frequent service calls or service problems. Amazon.com Canon CanoScan LiDE220 Photo and Document Download drivers, software, firmware and manuals for the CanoScan LiDE300. Online technical support, troubleshooting and howto's. Running Canon 120 LiDE scanner on Ubuntu 14.04 Stahujte ovladace, software, firmware a navody, a ziskejte pristup k online materialum technicke podpory a reseni problemu.

Nize vyberte vas skener CanoScan, CanoScan LiDE nebo jiny skener a ziskate pristup k nejnovjsim souborum ke stazeni vctne softwaru, navodu, ovladacu nebo firmwaru. Quick Start Guide

static.highspeedbackbone.net Dec 18, 2017 After having recently upgraded my iMac to High Sierra 10.13.1 my old Canon MP Navigator EX software stopped working. There is no new driver icon in Steves Digicams Canon Canoscan FS4000 US User Review If you are looking for the instruction manual Scanner CANON CANOSCAN LiDE 25 you have come to the right place. On this page you can download it for free. For details about manual, see the info below. The file is available in a few seconds as the connection speed of your internet. Driver Canon CanoScan LiDE 20 7.0.3.1a free Download NIB Canon CanoScan LiDE25 Flatbed Scanner NEVER USED SEALED UNIT image Scanner. Condition is New. functional and surprisingly affordable, the 1200dpi CanoScan LiDE 25 complements any creative environment. It draws all the power it needs from its USB connection, no power adaptor required. Manual Load. Show More Show Less. Find the user manual you need for your camera and more at ManualsOnline. Canon Photo Scanner CanoScan LiDe 50 User Guide ManualsOnline.com CanoScan LiDE 400 Color Image Scanner Canon Online Store Scanning in style. Just 38mm thick, the extraordinarily slender CanoScan LiDE 25 is the obvious choice for the uncluttered desk. Because of LiDE technology's tiny appetite for power, it does not require any clumsy power cords a single USB cable connected to your computer is the only lead you'll ever need. English Francais gdlp01.cwss.com Mar 17, 2015 A download of the free Driver Canon CanoScan LiDE 25 is a guarantee that you are not going to miss out on the features provided by your Canon CanoScan device. Indeed, the Canon CanoScan line of printers are becoming some of the most reliable and modern available.

<http://www.raumboerse-luzern.ch/mieten/bosch-maxx-classic-manual-e3>